



floor plans
2024

table of CONTENTS

The Fontana 1,220 Sq. Ft.	3
The Elm 1,264 Sq. Ft.	5
The Magnolia 1,374 Sq. Ft.	7
The Dogwood 1,432 Sq. Ft.	9
The Lyndon 1,454 Sq. Ft.	11
The Nantahala 1,503 Sq. Ft.	13
The Birch 1,568 Sq. Ft.	15
The Poplar 1,580 Sq. Ft	17
The Spruce 1,617 Sq. Ft.	19
The Blackberry 1,640 Sq. Ft	21
The Laurel 1,660 Sq. Ft	23
The St. Charles 1,750 Sq. Ft.	25
The Ashwood 1,754 Sq. Ft.	27
The Catawba 1,792 Sq. Ft.	29
The Oak 1,795 Sq. Ft.	31
The Leo 1,910 Sq. Ft.	33
The Faulkner 1,963 Sq. Ft.	35
The Ferndale 2,069 Sq. Ft	37
The Briarwood 2,140 Sq. Ft.	39
The Ridgewood 2,236 Sq. Ft	41
The Kimberly 2,273 Sq. Ft	43

The images and renderings used throughout this document are artistic interpretations of the home designs. They are not meant to be exact renditions. Some items pictured may not be standard and/or represent exact elements. Exact grading, landscaping, finishes, colors, and materials may differ.

01

the FONTANA

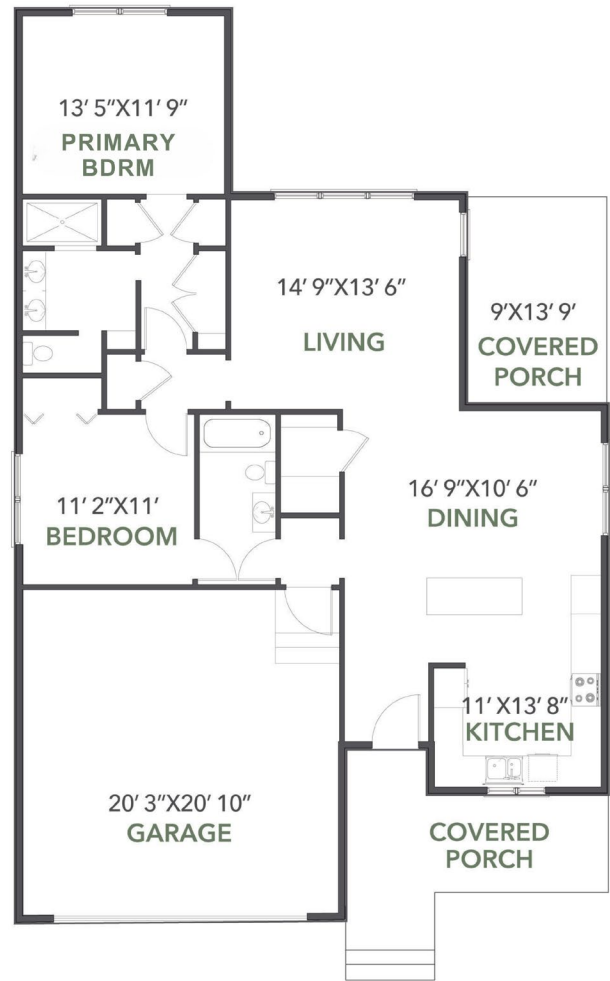
CRAFTSMAN STYLE

2 BEDROOMS

2 BATHROOMS

2 CAR GARAGE

1,220 SQUARE FEET



01

the FONTANA

» CRAFTSMAN STYLE

» 2 BEDROOMS

» 2 BATHROOMS

» 2 CAR GARAGE

» 1,220 SQUARE FEET

Garage: 421 Sq. Ft.

Deck: 123 Sq. Ft.

Front Porch: 96 Sq. Ft.

Exterior Features

- Double-hung low-maintenance windows
- Low-maintenance cement siding
- Low-maintenance exterior trim
- Large covered porch on front and rear
- Stained cedar shakes
- Fiberglass exterior doors
- Limited Lifetime Warranty on asphalt shingles

Interior Features

- 9' ceilings with smooth finish
- Cabinets with solid maple dovetail drawers and soft close hinges/slides
- Large open kitchen with island
- Quality plumbing fixtures
- Open floor plan
- Ceramic tile flooring in bathrooms
- Granite and/or quartz countertops
- Tiled shower enclosure in primary bath
- Vaulted ceilings where indicated
- Engineered hardwood or luxury vinyl flooring in main areas
- High-quality carpet in bedrooms
- Two coats of paint on the walls with flat finish walls and semi-gloss trim

HVAC & Electrical

- 14 SEER Heat Pump with dual zoning where applicable
- Ceiling fans in all bedrooms and covered deck areas. Light and fan switched separately
- Stainless appliances
- Lighting package to include recessed kitchen lights and pendant lighting over bar/island
- Attractive standard lighting packages
- 36" ventless gas fireplace with mantle and stone face finishes
- Various finishes available for all hardware. Includes towel bars and toilet paper holders for baths.

02

the ELM

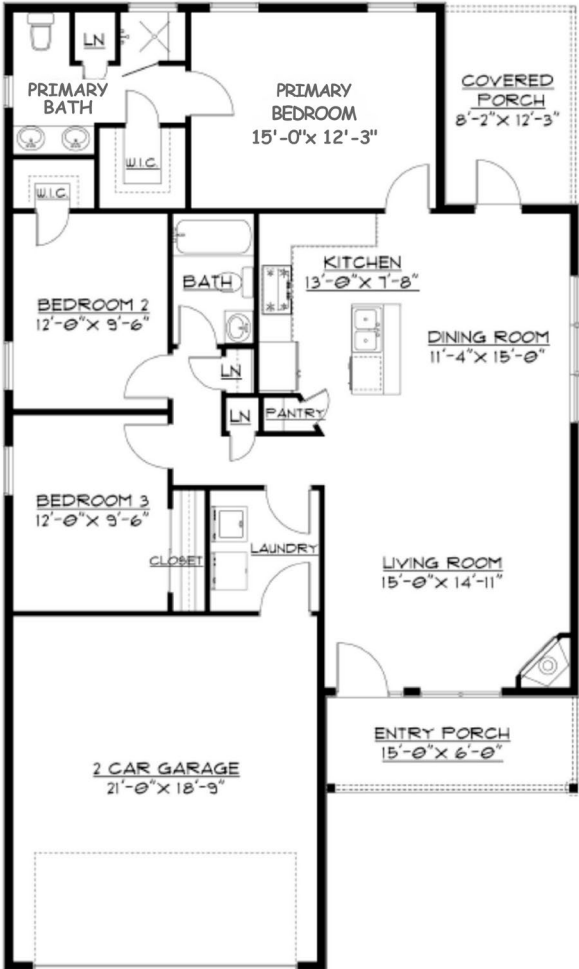
COTTAGE STYLE

3 BEDROOMS

2 BATHROOMS

2 CAR GARAGE

1,264 SQUARE FEET



02

the ELM

» COTTAGE STYLE

» 3 BEDROOMS

» 2 BATHROOMS

» 2 CAR GARAGE

» 1,264 SQUARE FEET

Garage: 425 Sq. Ft.

Deck: 96 Sq. Ft.

Front Porch: 90 Sq. Ft.

Exterior Features

- Double-hung low-maintenance windows
- Low-maintenance cement siding
- Covered porch on front and rear
- 2x6 exterior walls
- Fiberglass exterior doors
- Limited Lifetime Warranty on asphalt shingles

Interior Features

- 9' ceilings with smooth finish
- Cabinets with solid maple dovetail drawers and soft close hinges/slides
- Granite and/or quartz countertops
- Quality plumbing fixtures
- Open floor plan
- Raised height elongated bowl toilets
- Engineered hardwood or luxury vinyl flooring in main areas
- Ceramic tile flooring in bathrooms
- Tiled shower enclosure in primary bath
- Vaulted ceilings where indicated
- High-quality carpet in bedrooms
- Two coats of paint on the walls with flat finish walls and semi-gloss trim

HVAC & Electrical

- 14 SEER Heat Pump with dual zoning where applicable
- Ceiling fans in all bedrooms and covered deck areas. Light and fan switched separately.
- Stainless appliances
- Lighting package to include recessed kitchen lights and pendant lighting over bar/island.
- Attractive standard lighting packages
- 36" ventless gas fireplace with mantle and stone face finishes
- Various finishes available for all hardware. Includes towel bars and toilet paper holders for baths

03

the MAGNOLIA

COTTAGE STYLE

3 BEDROOMS

2 BATHROOMS

2 CAR GARAGE

1,374 SQUARE FEET



03

the MAGNOLIA

» COTTAGE STYLE

» 3 BEDROOMS

» 2 BATHROOMS

» 2 CAR GARAGE

» 1,374 SQUARE FEET

Garage: 500 Sq. Ft.

Deck: 110 Sq. Ft.

Exterior Features

- Double-hung low-maintenance windows
- Low-maintenance cement siding
- 2x6 exterior walls
- Fiberglass exterior doors
- Limited Lifetime Warranty on asphalt shingles
- Lifetime Warranty on asphalt shingles

Interior Features

- 9' ceilings with smooth finish
- Cabinets with solid maple dovetail drawers and soft close hinges/slides
- Granite and/or quartz countertops
- Quality plumbing fixtures
- Raised height elongated bowl toilets
- Engineered hardwood or luxury vinyl flooring in main areas
- Ceramic tile flooring in bathrooms
- Tiled shower enclosure in primary bath
- Vaulted ceilings where indicated
- Tray ceiling in primary bedroom
- High-quality carpet in bedrooms
- Two coats of paint on the walls with flat finish walls and semi-gloss trim

HVAC & Electrical

- 14 SEER Heat Pump with dual zoning where applicable
- Ceiling fans in all bedrooms and covered deck areas. Light and fan switched separately.
- Stainless appliances
- Lighting package to include recessed kitchen lights and pendant lighting over bar/island.
- Attractive standard lighting packages
- 36" ventless gas fireplace with mantle and stone face finishes
- Various finishes available for all hardware. Includes towel bars and toilet paper holders for baths

04

the DOGWOOD

COTTAGE STYLE

3 BEDROOMS

2 BATHROOMS

2 CAR GARAGE

1,432 SQUARE FEET



04

the DOGWOOD

» COTTAGE STYLE

» 3 BEDROOMS

» 2 BATHROOMS

» 2 CAR GARAGE

» 1,432 SQUARE FEET

Garage: 420 Sq. Ft.

Deck: 160 Sq. Ft.

Exterior Features

- Double-hung low-maintenance windows
- Low-maintenance cement siding
- 2x6 exterior walls
- Fiberglass exterior doors
- Limited Lifetime Warranty on asphalt shingles

Interior Features

- 9' ceilings with smooth finish
- Cabinets with solid maple dovetail drawers and soft close hinges/slides
- Granite and/or quartz countertops
- Quality plumbing fixtures
- Raised height elongated bowl toilets
- Engineered hardwood or luxury vinyl flooring in main areas
- Ceramic tile flooring in bathrooms
- Tiled shower enclosure in primary bath
- Vaulted ceilings where indicated
- Tray ceiling in primary bedroom
- High-quality carpet in bedrooms
- Two coats of paint on the walls with flat finish walls and semi-gloss trim

HVAC & Electrical

- 14 SEER Heat Pump with dual zoning where applicable
- Ceiling fans in all bedrooms and covered deck areas. Light and fan switched separately.
- Stainless appliances
- Lighting package to include recessed kitchen lights and pendant lighting over bar/island.
- Attractive standard lighting packages
- 36" ventless gas fireplace with mantle and stone face finishes
- Various finishes available for all hardware. Includes towel bars and toilet paper holders for baths

the LYNDON

COTTAGE STYLE

3 BEDROOMS
+ *Optional Bonus Room*

2 BATHROOMS

2 CAR GARAGE

1,454 SQUARE FEET



the LYNDON

» COTTAGE STYLE

» 3 BEDROOMS + OPTIONAL BONUS ROOM

» 2 BATHROOMS

» 2 CAR GARAGE

» 1,454 SQUARE FEET

Bonus Room: +193 Sq. Ft.

Garage: 450 Sq. Ft.

Deck: 76 Sq. Ft.

Front Porch: 85 Sq. Ft.

Exterior Features

- Double-hung low-maintenance windows
- Low-maintenance cement siding
- Covered porch on front and rear
- 2x6 exterior walls
- Fiberglass exterior doors
- Limited Lifetime Warranty on asphalt shingles

Interior Features

- 9' ceilings with smooth finish
- Cabinets with solid maple dovetail drawers and soft close hinges/slides
- Granite and/or quartz countertops
- Quality plumbing fixtures
- Open floor plan
- Raised height elongated bowl toilets
- Engineered hardwood or luxury vinyl flooring in main areas
- Ceramic tile flooring in bathrooms
- Tiled shower enclosure in primary bath
- ADA blocking for future grab bars
- Curbless shower entry for accessibility
- Vaulted ceilings where indicated
- High-quality carpet in bedrooms
- Two coats of paint on the walls with flat finish walls and semi-gloss trim

HVAC & Electrical

- 14 SEER Heat Pump with dual zoning where applicable
- Ceiling fans in all bedrooms and covered deck areas. Light and fan switched separately.
- Stainless appliances
- Lighting package to include recessed kitchen lights and pendant lighting over bar/island.
- Attractive standard lighting packages
- 36" ventless gas fireplace with mantle and stone face finishes
- Various finishes available for all hardware. Includes towel bars and toilet paper holders for baths

05

the NANTAHALA

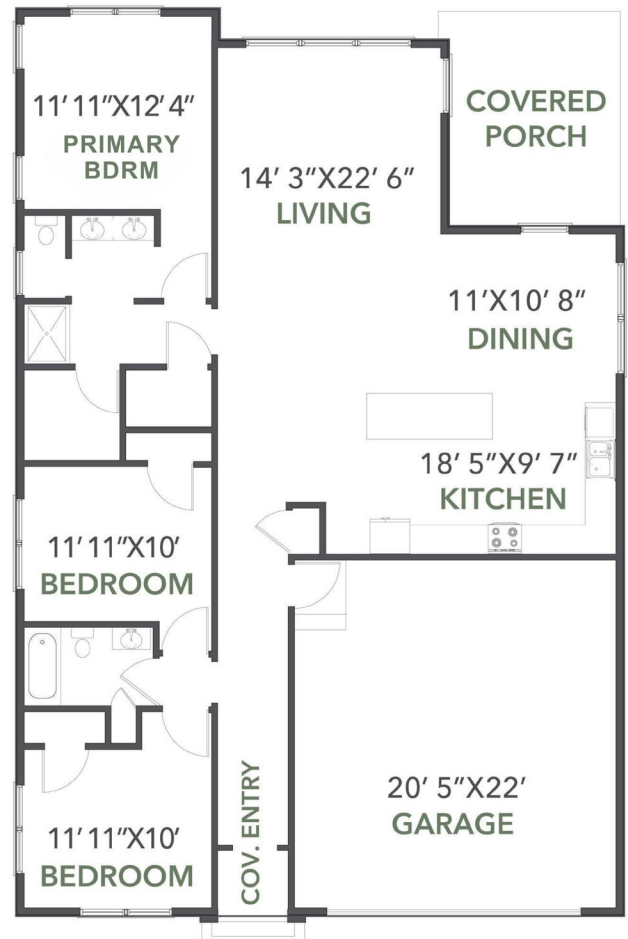
CRAFTSMAN STYLE

3 BEDROOMS

2 BATHROOMS

2 CAR GARAGE

1,503 SQUARE FEET



05

the NANTAHALA

» CRAFTSMAN STYLE

» 3 BEDROOMS

» 2 BATHROOMS

» 2 CAR GARAGE

» 1,503 SQUARE FEET

Garage: 448 Sq. Ft.

Deck: 22 Sq. Ft.

Front Porch: 22 Sq. Ft.

Exterior Features

- Double-hung low-maintenance windows
- Low-maintenance cement siding
- Low-maintenance exterior trim
- Large covered deck
- Stained cedar shakes
- Fiberglass exterior doors
- Limited Lifetime Warranty on asphalt shingles

Interior Features

- 9' ceilings with smooth finish
- Cabinets with solid maple dovetail drawers and soft close hinges/slides
- Large open kitchen with island
- Quality plumbing fixtures
- Open floor plan
- Ceramic tile flooring in bathrooms
- Granite and/or quartz countertops
- Tiled shower enclosure in primary bath
- Vaulted ceilings where indicated
- Engineered hardwood or luxury vinyl flooring in main areas
- High-quality carpet in bedrooms
- Two coats of paint on the walls with flat finish walls and semi-gloss trim

HVAC & Electrical

- 14 SEER Heat Pump with dual zoning where applicable
- Ceiling fans in all bedrooms and covered deck areas. Light and fan switched separately
- Stainless appliances
- Lighting package to include recessed kitchen lights and pendant lighting over bar/island
- Attractive standard lighting packages
- 36" ventless gas fireplace with mantle and stone face finishes
- Various finishes available for all hardware. Includes towel bars and toilet paper holders for baths

06

the BIRCH

COTTAGE STYLE

3 BEDROOMS

2 BATHROOMS

2 CAR GARAGE

1,568 SQUARE FEET



06

the BIRCH

» COTTAGE STYLE

» 3 BEDROOMS

» 2 BATHROOMS

» 2 CAR GARAGE

» 1,568 SQUARE FEET

Garage: 400 Sq. Ft.

Deck: 256 Sq. Ft.

Exterior Features

- Double-hung low-maintenance windows
- Low-maintenance cement siding
- 2x6 exterior walls
- Fiberglass exterior doors
- Limited Lifetime Warranty on asphalt shingles

Interior Features

- 9' ceilings with smooth finish
- Cabinets with solid maple dovetail drawers and soft close hinges/slides
- Granite and/or quartz countertops
- Quality plumbing fixtures
- Open floor plan
- Raised height elongated bowl toilets
- Engineered hardwood or luxury vinyl flooring in main areas
- Ceramic tile flooring in bathrooms
- Tiled shower enclosure in primary bath
- Vaulted ceilings where indicated
- Tray ceiling in primary bedroom
- High-quality carpet in bedrooms
- Two coats of paint on the walls with flat finish walls and semi-gloss trim

HVAC & Electrical

- 14 SEER Heat Pump with dual zoning where applicable
- Ceiling fans in all bedrooms and covered deck areas. Light and fan switched separately.
- Stainless appliances
- Lighting package to include recessed kitchen lights and pendant lighting over bar/island.
- Attractive standard lighting packages
- 36" ventless gas fireplace with mantle and stone face finishes
- Various finishes available for all hardware. Includes towel bars and toilet paper holders for baths

the POPLAR

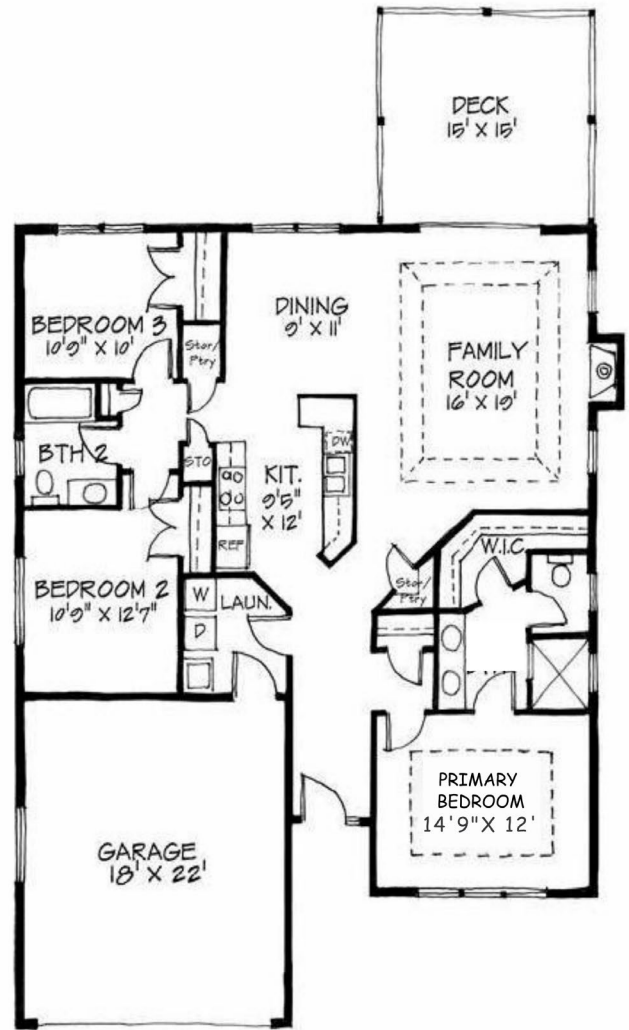
CRAFTSMAN STYLE

3 BEDROOMS

2 BATHROOMS

2 CAR GARAGE

1,580 SQUARE FEET



the POPLAR

» CRAFTSMAN STYLE

» 3 BEDROOMS

» 2 BATHROOMS

» 2 CAR GARAGE

» 1,580 SQUARE FEET

Garage: 396 Sq. Ft.

Deck: 255 Sq. Ft.

Exterior Features

- Double-hung low-maintenance windows
- Low-maintenance cement siding
- Low-maintenance exterior trim
- Large deck off of living room
- Stone details on front façade
- Fiberglass exterior doors
- Limited Lifetime Warranty on asphalt shingles

Interior Features

- 9' ceilings with smooth finish
- Cabinets with solid maple dovetail drawers and soft close hinges/slides
- Quality plumbing fixtures
- Open floor plan
- Ceramic tile flooring in bathrooms
- Large open kitchen with island
- Granite and/or quartz countertops
- Tiled shower enclosure in primary bath
- Vaulted ceilings where indicated
- Tray ceiling in primary bedroom and living room
- Engineered hardwood or luxury vinyl flooring in main areas
- High-quality carpet in bedrooms
- Two coats of paint on the walls with flat finish walls and semi-gloss trim

HVAC & Electrical

- 14 SEER Heat Pump with dual zoning where applicable
- Ceiling fans in all bedrooms and covered deck areas. Light and fan switched separately
- Stainless appliances
- Lighting package to include recessed kitchen lights and pendant lighting over bar/island
- Attractive standard lighting packages
- 36" ventless gas fireplace with mantle and stone face finishes
- Various finishes available for all hardware. Includes towel bars and toilet paper holders for baths

09

the SPRUCE

COTTAGE STYLE

3 BEDROOMS

2 BATHROOMS

2 CAR GARAGE

1,617 SQUARE FEET



the SPRUCE

» COTTAGE STYLE

» 3 BEDROOMS

» 2 BATHROOMS

» 2 CAR GARAGE

» 1,617 SQUARE FEET

Deck: 108 Sq. Ft.

Front Porch: 98 Sq. Ft.

Exterior Features

- Double-hung low-maintenance windows
- Low-maintenance cement siding
- Low-maintenance exterior trim
- Large covered deck
- Fiberglass exterior doors
- Limited Lifetime Warranty on asphalt shingles

Interior Features

- 9' ceilings with smooth finish
- Cabinets with solid maple dovetail drawers and soft close hinges/slides
- Large open kitchen with island
- Quality plumbing fixtures
- Open floor plan
- Ceramic tile flooring in bathrooms
- Large laundry and mudroom
- Granite and/or quartz countertops
- Tiled shower enclosure in primary bath
- Vaulted ceilings where indicated
- Engineered hardwood or luxury vinyl flooring in main areas
- High-quality carpet in bedrooms
- Two coats of paint on the walls with flat finish walls and semi-gloss trim

HVAC & Electrical

- 14 SEER Heat Pump with dual zoning where applicable
- Ceiling fans in all bedrooms and covered deck areas. Light and fan switched separately
- Stainless appliances
- Lighting package to include recessed kitchen lights and pendant lighting over bar/island
- Attractive standard lighting packages
- 36" ventless gas fireplace with mantle and stone face finishes
- Various finishes available for all hardware. Includes towel bars and toilet paper holders for baths

the BLACKBERRY

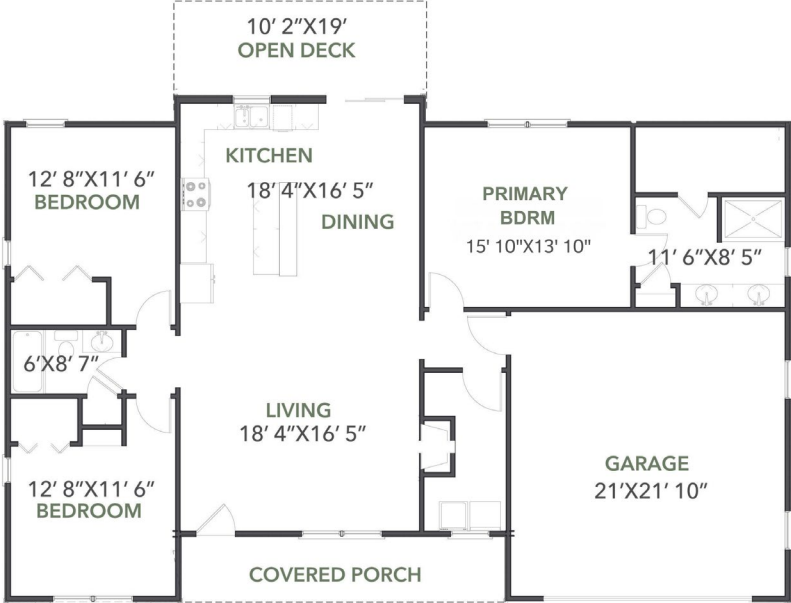
CRAFTSMAN STYLE

3 BEDROOMS

2 BATHROOMS

2 CAR GARAGE

1,640 SQUARE FEET



04

the BLACKBERRY

» CRAFTSMAN STYLE

» 3 BEDROOMS

» 2 BATHROOMS

» 2 CAR GARAGE

» 1,640 SQUARE FEET

Garage: 458 Sq. Ft.

Deck: 190 Sq. Ft.

Front Porch: 125 Sq. Ft.

Exterior Features

- Double-hung low-maintenance windows
- Low-maintenance cement siding
- Low-maintenance exterior trim
- Covered front porch
- Stained cedar shakes
- Fiberglass exterior doors
- Limited Lifetime Warranty on asphalt shingles

Interior Features

- 9' ceilings with smooth finish
- 12' ceilings in living, dining, and kitchen area
- Cabinets with solid maple dovetail drawers and soft close hinges/slides
- Large open kitchen with island
- Quality plumbing fixtures
- Open floor plan
- Ceramic tile flooring in bathrooms
- Walk-in laundry room
- Granite and/or quartz countertops
- Tiled shower enclosure in primary bath
- Vaulted ceilings where indicated
- Engineered hardwood or luxury vinyl flooring in main areas
- High-quality carpet in bedrooms
- Two coats of paint on the walls with flat finish walls and semi-gloss trim

HVAC & Electrical

- 14 SEER Heat Pump with dual zoning where applicable
- Ceiling fans in all bedrooms and covered deck areas. Light and fan switched separately
- Stainless appliances
- Lighting package to include recessed kitchen lights and pendant lighting over bar/island
- Attractive standard lighting packages
- 36" ventless gas fireplace with mantle and stone face finishes
- Various finishes available for all hardware. Includes towel bars and toilet paper holders for baths
- Includes towel bars and toilet paper holders for baths

the LAUREL

COTTAGE STYLE

3 BEDROOMS
+ *Optional Bonus Room*

2 BATHROOMS

2 CAR GARAGE

1,660 SQUARE FEET



the LAUREL

» COTTAGE STYLE

» 3 BEDROOMS + OPTIONAL BONUS ROOM

» 2 BATHROOMS

» 2 CAR GARAGE

» 1,660 SQUARE FEET

Bonus Room: +223 Sq. Ft.

Garage: 462 Sq. Ft.

Deck: 144 Sq. Ft.

Front Porch: 170 Sq. Ft.

Exterior Features

- Double-hung low-maintenance windows
- Low-maintenance cement siding
- 2x6 exterior walls
- Covered porch on front and rear
- Fiberglass exterior doors
- Limited Lifetime Warranty on asphalt shingles

Interior Features

- 9' ceilings with smooth finish
- Cabinets with solid maple dovetail drawers and soft close hinges/slides
- Granite and/or quartz countertops
- Quality plumbing fixtures
- Raised height elongated bowl toilets
- Engineered hardwood or luxury vinyl flooring in main areas
- Ceramic tile flooring in bathrooms
- Tiled shower enclosure in primary bath
- ADA blocking for future grab bars
- Curbless shower entry for accessibility
- Vaulted ceilings where indicated
- Tray ceiling in dining room
- High-quality carpet in bedrooms
- Two coats of paint on the walls with flat finish walls and semi-gloss trim

HVAC & Electrical

- 14 SEER Heat Pump with dual zoning where applicable
- Ceiling fans in all bedrooms and covered deck areas. Light and fan switched separately.
- Stainless appliances
- Lighting package to include recessed kitchen lights and pendant lighting over bar/island.
- Attractive standard lighting packages
- 36" ventless gas fireplace with mantle and stone face finishes
- Various finishes available for all hardware. Includes towel bars and toilet paper holders for baths

the ST. CHARLES

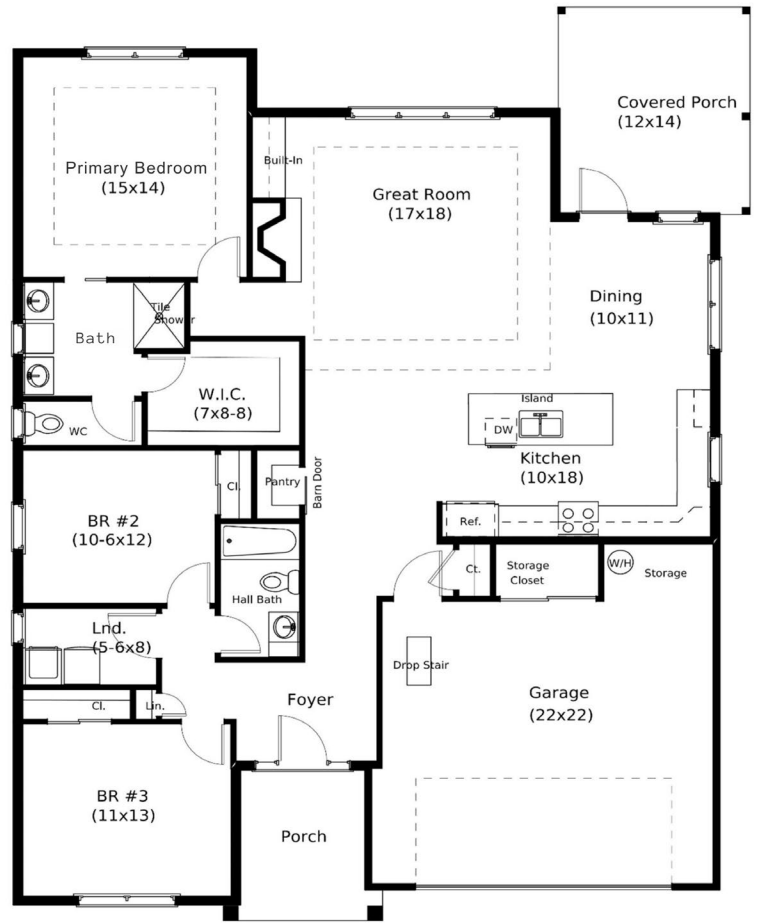
COTTAGE STYLE

3 BEDROOMS

2 BATHROOMS

2 CAR GARAGE

1,750 SQUARE FEET



the ST. CHARLES

» COTTAGE STYLE

» 3 BEDROOMS

» 2 BATHROOMS

» 2 CAR GARAGE

» 1,750 SQUARE FEET

Garage: 506 Sq. Ft.

Deck: 168 Sq. Ft.

Front Porch: 40 Sq. Ft.

Exterior Features

- Double-hung low-maintenance windows
- Low-maintenance cement siding
- 2x6 exterior walls
- Fiberglass exterior doors
- Limited Lifetime Warranty on asphalt shingles

Interior Features

- 9' ceilings with smooth finish
- Cabinets with solid maple dovetail drawers and soft close hinges/slides
- Granite and/or quartz countertops
- Quality plumbing fixtures
- Raised height elongated bowl toilets
- Engineered hardwood or luxury vinyl flooring in main areas
- Ceramic tile flooring in bathrooms
- Tiled shower enclosure in primary bath
- ADA blocking for future grab bars
- Curbless shower entry for accessibility
- Vaulted ceilings where indicated
- Tray ceiling in living room and primary bedroom
- Barn door pantry
- High-quality carpet in bedrooms
- Two coats of paint on the walls with flat finish walls and semi-gloss trim

HVAC & Electrical

- 14 SEER Heat Pump with dual zoning where applicable
- Ceiling fans in all bedrooms and covered deck areas. Light and fan switched separately.
- Stainless appliances
- Lighting package to include recessed kitchen lights and pendant lighting over bar/island.
- Attractive standard lighting packages
- 36" ventless gas fireplace with mantle and stone face finishes
- Various finishes available for all hardware. Includes towel bars and toilet paper holders for baths

the ASHWOOD

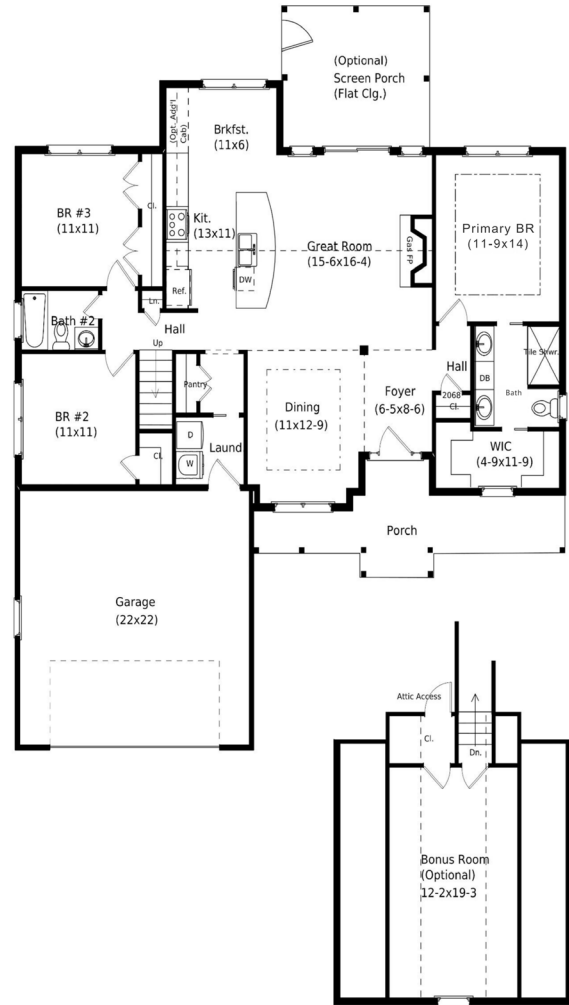
COTTAGE STYLE

3 BEDROOMS
+ *Optional Bonus Room*

2 BATHROOMS

2 CAR GARAGE

1,754 SQUARE FEET



the ASHWOOD

» COTTAGE STYLE

» 3 BEDROOMS + OPTIONAL BONUS ROOM

» 2 BATHROOMS

» 2 CAR GARAGE

» 1,754 SQUARE FEET

Bonus Room: +288 Sq. Ft.

Garage: 476 Sq. Ft.

Deck: 168 Sq. Ft.

Front Porch: 94 Sq. Ft.

Exterior Features

- Double-hung low-maintenance windows
- Low-maintenance cement siding
- Covered porch on front and rear
- 2x6 exterior walls
- Fiberglass exterior doors
- Limited Lifetime Warranty on asphalt shingles

Interior Features

- 9' ceilings with smooth finish
- Cabinets with solid maple dovetail drawers and soft close hinges/slides
- Granite and/or quartz countertops
- Quality plumbing fixtures
- Raised height elongated bowl toilets
- Engineered hardwood or luxury vinyl flooring in main areas
- Ceramic tile flooring in bathrooms
- Tiled shower enclosure in primary bath
- ADA blocking for future grab bars
- Curbless shower entry for accessibility
- Vaulted ceilings where indicated
- Tray ceiling in dining room and primary bedroom
- High-quality carpet in bedrooms
- Two coats of paint on the walls with flat finish walls and semi-gloss trim

HVAC & Electrical

- 14 SEER Heat Pump with dual zoning where applicable
- Ceiling fans in all bedrooms and covered deck areas. Light and fan switched separately.
- Stainless appliances
- Lighting package to include recessed kitchen lights and pendant lighting over bar/island.
- Attractive standard lighting packages
- 36" ventless gas fireplace with mantle and stone face finishes
- Various finishes available for all hardware. Includes towel bars and toilet paper holders for baths

the CATAWBA

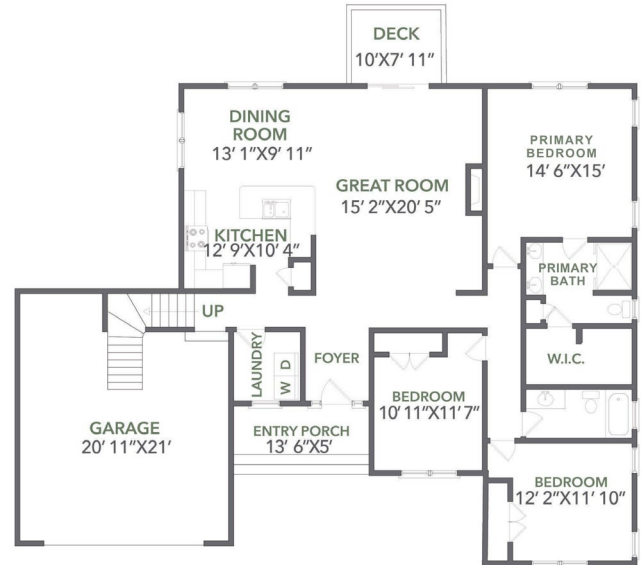
CRAFTSMAN STYLE

3 BEDROOMS
+ *Optional Bonus Room*

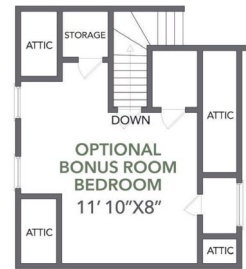
2 BATHROOMS

2 CAR GARAGE

1,792 SQUARE FEET



MAIN



UPPER



the CATAWBA

» CRAFTSMAN STYLE

» 3 BEDROOMS + OPTIONAL BONUS ROOM

» 2 BATHROOMS

» 2 CAR GARAGE

» 1,792 SQUARE FEET

Bonus Room: +375 Sq. Ft.

Deck: 205 Sq. Ft.

Front Porch: 68 Sq. Ft.

Exterior Features

- Double-hung low-maintenance windows
- Low-maintenance cement siding
- Low-maintenance exterior trim
- Covered porch on front and rear
- Stained cedar shakes
- Fiberglass exterior doors
- Limited Lifetime Warranty on asphalt shingles

Interior Features

- 9' ceilings with smooth finish
- Cabinets with solid maple dovetail drawers and soft close hinges/slides
- Large open kitchen
- Quality plumbing fixtures
- Open floor plan
- Ceramic tile flooring in bathrooms
- Granite and/or quartz countertops
- Tiled shower enclosure in primary bath
- Vaulted ceilings where indicated
- Engineered hardwood or luxury vinyl flooring in main areas
- High-quality carpet in bedrooms
- Two coats of paint on the walls with flat finish walls and semi-gloss trim

HVAC & Electrical

- 14 SEER Heat Pump with dual zoning where applicable
- Ceiling fans in all bedrooms and covered deck areas. Light and fan switched separately
- Stainless appliances
- Lighting package to include recessed kitchen lights and pendant lighting over bar/island
- Attractive standard lighting packages
- 36" ventless gas fireplace with mantle and stone face finishes
- Various finishes available for all hardware. Includes towel bars and toilet paper holders for baths

08

the OAK

COTTAGE STYLE

3 BEDROOMS

2 BATHROOMS

2 CAR GARAGE

1,795 SQUARE FEET



08

the OAK

» COTTAGE STYLE

» 3 BEDROOMS

» 2 BATHROOMS

» 2 CAR GARAGE

» 1,795 SQUARE FEET

Garage: 466 Sq. Ft.

Deck: 181 Sq. Ft.

Front Porch: 90 Sq. Ft.

Exterior Features

- Double-hung low-maintenance windows
- Low-maintenance cement siding
- Covered porch on front and rear
- 2x6 exterior walls
- Fiberglass exterior doors
- Limited Lifetime Warranty on asphalt shingles

Interior Features

- 9' ceilings with smooth finish
- Cabinets with solid maple dovetail drawers and soft close hinges/slides
- Granite and/or quartz countertops
- Quality plumbing fixtures
- Open floor plan
- Raised height elongated bowl toilets
- Engineered hardwood or luxury vinyl flooring in main areas
- Ceramic tile flooring in bathrooms
- Tiled shower enclosure in primary bath
- Vaulted ceilings where indicated
- High-quality carpet in bedrooms
- Two coats of paint on the walls with flat finish walls and semi-gloss trim

HVAC & Electrical

- 14 SEER Heat Pump with dual zoning where applicable
- Ceiling fans in all bedrooms and covered deck areas. Light and fan switched separately.
- Stainless appliances
- Lighting package to include recessed kitchen lights and pendant lighting over bar/island.
- Attractive standard lighting packages
- 36" ventless gas fireplace with mantle and stone face finishes
- Various finishes available for all hardware. Includes towel bars and toilet paper holders for baths

the LEO

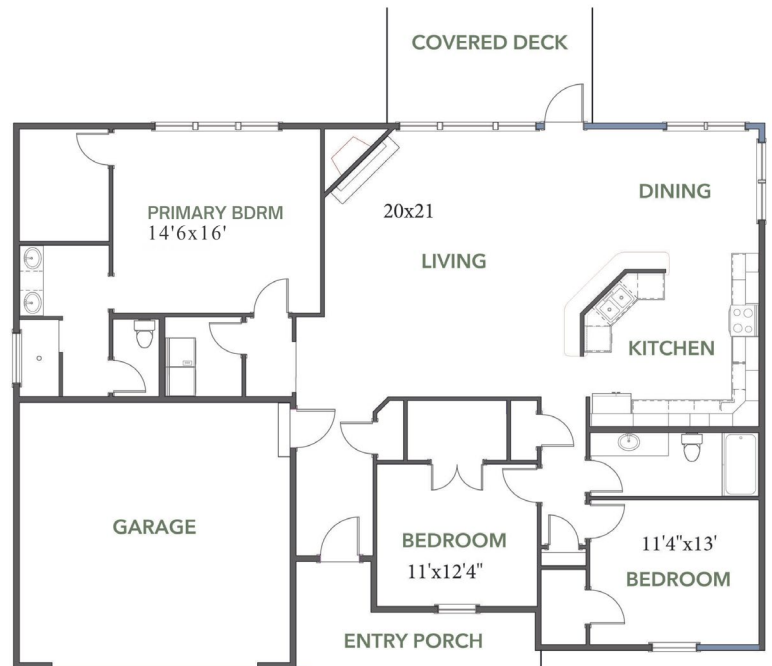
CRAFTSMAN STYLE

3 BEDROOMS

2 BATHROOMS

2 CAR GARAGE

1,910 SQUARE FEET



the LEO

» CRAFTSMAN STYLE

» 3 BEDROOMS

» 2 BATHROOMS

» 2 CAR GARAGE

» 1,910 SQUARE FEET

Deck: 165 Sq. Ft.

Front Porch: 108 Sq. Ft.

Exterior Features

- Double-hung low-maintenance windows
- Low-maintenance cement siding
- Low-maintenance exterior trim
- Large covered porch on front and rear
- Stained cedar shakes
- Stone details on front façade
- Fiberglass exterior doors
- Limited Lifetime Warranty on asphalt shingles

Interior Features

- 9' ceilings with smooth finish
- Cabinets with solid maple dovetail drawers and soft close hinges/slides
- Quality plumbing fixtures
- Open floor plan
- Ceramic tile flooring in bathrooms
- Large laundry and pantry
- Granite and/or quartz countertops
- Tiled shower enclosure in primary bath
- Vaulted ceilings where indicated
- Engineered hardwood or luxury vinyl flooring in main areas
- High-quality carpet in bedrooms
- Two coats of paint on the walls with flat finish walls and semi-gloss trim

HVAC & Electrical

- 14 SEER Heat Pump with dual zoning where applicable
- Ceiling fans in all bedrooms and covered deck areas. Light and fan switched separately
- Stainless appliances
- Lighting package to include recessed kitchen lights and pendant lighting over bar/island
- Attractive standard lighting packages
- 36" ventless gas fireplace with mantle and stone face finishes
- Various finishes available for all hardware. Includes towel bars and toilet paper holders for baths

10

the FAULKNER

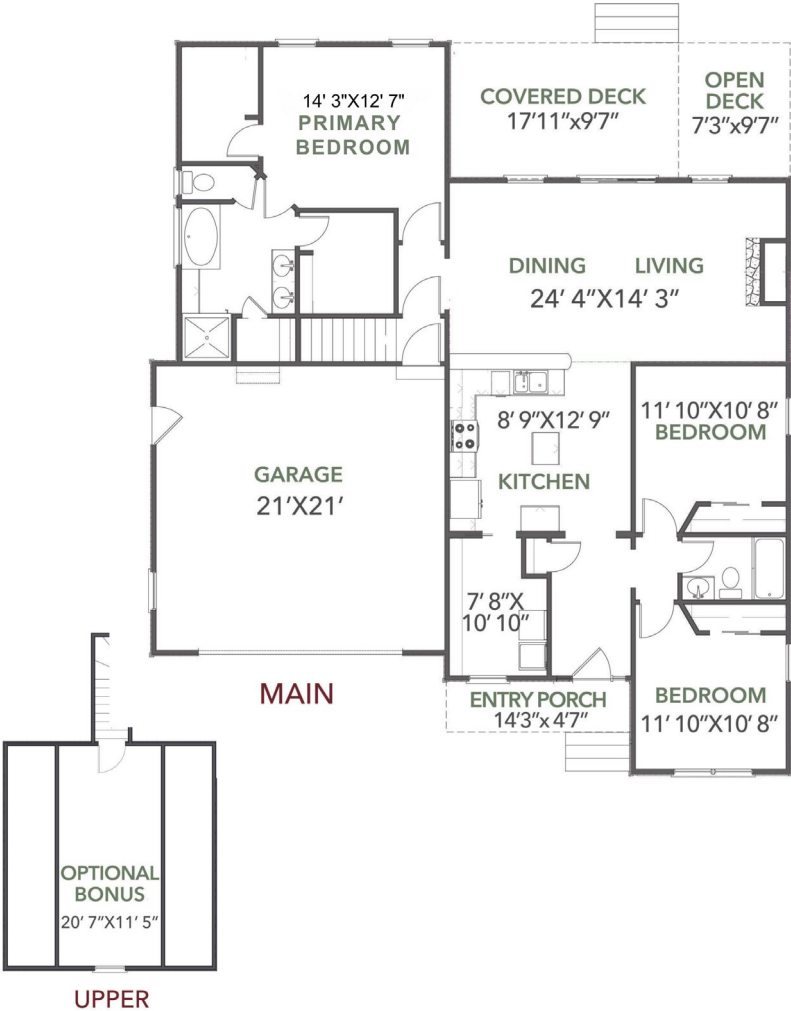
COTTAGE STYLE

3 BEDROOMS
+ *Optional Bonus Room*

2 BATHROOMS

2 CAR GARAGE

1,963 SQUARE FEET



the FAULKNER

» COTTAGE STYLE

» 3 BEDROOMS + OPTIONAL BONUS ROOM

» 2 BATHROOMS

» 2 CAR GARAGE

» 1,963 SQUARE FEET

Bonus Room: +280 Sq. Ft.

Deck: 258 Sq. Ft.

Front Porch: 75 Sq. Ft.

Exterior Features

- Double-hung low-maintenance windows
- Low-maintenance cement siding
- Low-maintenance exterior trim
- Large covered porch on front and rear
- Stained cedar shakes
- Stone details on front façade
- Fiberglass exterior doors
- Limited Lifetime Warranty on asphalt shingles

Interior Features

- 9' ceilings with smooth finish
- Cabinets with solid maple dovetail drawers and soft close hinges/slides
- Quality plumbing fixtures
- Open floor plan
- Ceramic tile flooring in bathrooms
- Large laundry and pantry
- Granite and/or quartz countertops
- Raised bar top in kitchen
- Tiled shower enclosure in primary bath
- Vaulted ceilings where indicated
- Engineered hardwood or luxury vinyl flooring in main areas
- High-quality carpet in bedrooms
- Two coats of paint on the walls with flat finish walls and semi-gloss trim

HVAC & Electrical

- 14 SEER Heat Pump with dual zoning where applicable
- Ceiling fans in all bedrooms and covered deck areas. Light and fan switched separately
- Stainless appliances
- Lighting package to include recessed kitchen lights and pendant lighting over bar/island
- Attractive standard lighting packages
- 36" ventless gas fireplace with mantle and stone face finishes
- Various finishes available for all hardware. Includes towel bars and toilet paper holders for baths

the FERNDALE

COTTAGE STYLE

3 BEDROOMS
+ *Optional Bonus Room*

2 BATHROOMS

2 CAR GARAGE

2,069 SQUARE FEET



the FERNDALE

» COTTAGE STYLE

» 3 BEDROOMS + OPTIONAL BONUS ROOM

» 2 BATHROOMS

» 2 CAR GARAGE

» 1,432 SQUARE FEET

Bonus Room: +302 Sq. Ft.

Garage: 528 Sq. Ft.

Deck: 144 Sq. Ft.

Front Porch: 45 Sq. Ft.

Exterior Features

- Double-hung low-maintenance windows
- Low-maintenance cement siding
- 2x6 exterior walls
- Fiberglass exterior doors
- Limited Lifetime Warranty on asphalt shingles

Interior Features

- 9' ceilings with smooth finish
- Cabinets with solid maple dovetail drawers and soft close hinges/slides
- Granite and/or quartz countertops
- Quality plumbing fixtures
- Raised height elongated bowl toilets
- Engineered hardwood or luxury vinyl flooring in main areas
- Ceramic tile flooring in bathrooms
- Tiled shower enclosure in primary bath
- ADA blocking for future grab bars
- Curbless shower entry for accessibility
- Vaulted ceilings where indicated
- Tray ceilings are optional
- High-quality carpet in bedrooms
- Two coats of paint on the walls with flat finish walls and semi-gloss trim

HVAC & Electrical

- 14 SEER Heat Pump with dual zoning where applicable
- Ceiling fans in all bedrooms and covered deck areas. Light and fan switched separately.
- Stainless appliances
- Lighting package to include recessed kitchen lights and pendant lighting over bar/island.
- Attractive standard lighting packages
- 36" ventless gas fireplace with mantle and stone face finishes
- Various finishes available for all hardware. Includes towel bars and toilet paper holders for baths

the BRIARWOOD

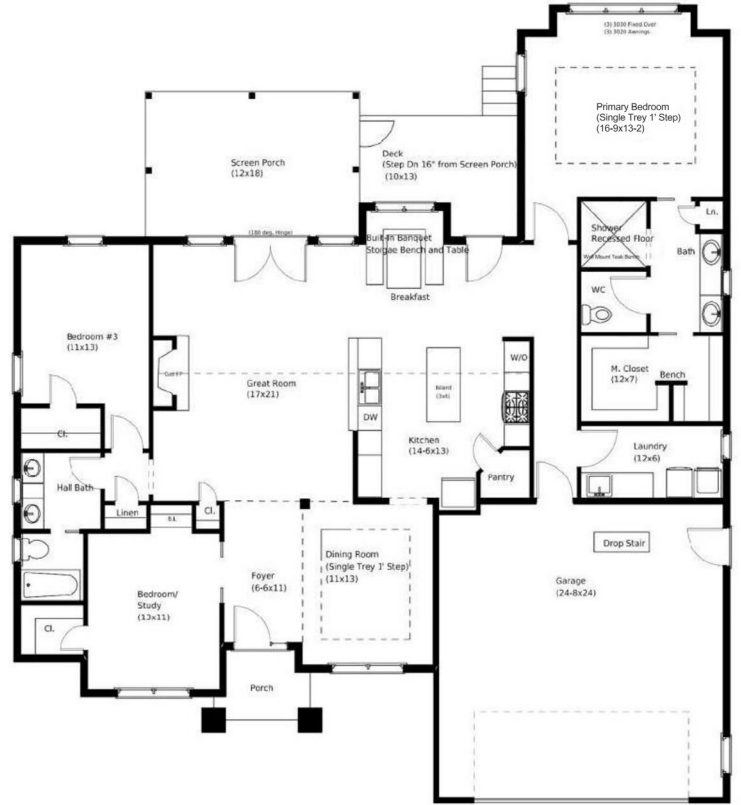
COTTAGE STYLE

3 BEDROOMS

3 BATHROOMS

2 CAR GARAGE

2,140 SQUARE FEET



the BRIARWOOD

» COTTAGE STYLE

» 3 BEDROOMS

» 2 BATHROOMS

» 2 CAR GARAGE

» 2,140 SQUARE FEET

Garage: 576 Sq. Ft.

Deck: 130 Sq. Ft.

Front Porch: 40 Sq. Ft.

Exterior Features

- Double-hung low-maintenance windows
- Low-maintenance cement siding
- 2x6 exterior walls
- Large covered deck
- Fiberglass exterior doors
- Limited Lifetime Warranty on asphalt shingles

Interior Features

- 9' ceilings with smooth finish
- Cabinets with solid maple dovetail drawers and soft close hinges/slides
- Granite and/or quartz countertops
- Quality plumbing fixtures
- Raised height elongated bowl toilets
- Engineered hardwood or luxury vinyl flooring in main areas
- Ceramic tile flooring in bathrooms
- Tiled shower enclosure in primary bath
- ADA blocking for future grab bars
- Curbless shower entry for accessibility
- Vaulted ceilings where indicated
- Tray ceilings are optional
- High-quality carpet in bedrooms
- Two coats of paint on the walls with flat finish walls and semi-gloss trim

HVAC & Electrical

- 14 SEER Heat Pump with dual zoning where applicable
- Ceiling fans in all bedrooms and covered deck areas. Light and fan switched separately.
- Stainless appliances
- Lighting package to include recessed kitchen lights and pendant lighting over bar/island.
- Attractive standard lighting packages
- 36" ventless gas fireplace with mantle and stone face finishes
- Various finishes available for all hardware. Includes towel bars and toilet paper holders for baths

18

the RIDGEWOOD

COTTAGE STYLE

4 BEDROOMS

3 BATHROOMS

2 CAR GARAGE

2,236 SQUARE FEET



the RIDGEWOOD

» COTTAGE STYLE

» 4 BEDROOMS

» 3 BATHROOMS

» 2 CAR GARAGE

» 2,236 SQUARE FEET

Garage: 550 Sq. Ft.

Deck: 192 Sq. Ft.

Front Porch: 168 Sq. Ft.

Exterior Features

- Double-hung low-maintenance windows
- Low-maintenance cement siding
- 2x6 exterior walls
- Fiberglass exterior doors
- Limited Lifetime Warranty on asphalt shingles

Interior Features

- 9' ceilings with smooth finish
- Cabinets with solid maple dovetail drawers and soft close hinges/slides
- Granite and/or quartz countertops
- Quality plumbing fixtures
- Raised height elongated bowl toilets
- Engineered hardwood or luxury vinyl flooring in main areas
- Ceramic tile flooring in bathrooms
- Tiled shower enclosure in primary bath
- ADA blocking for future grab bars
- Curbless shower entry for accessibility
- Vaulted ceilings where indicated
- Tray ceiling in dining room and primary bedroom
- High-quality carpet in bedrooms
- Two coats of paint on the walls with flat finish walls and semi-gloss trim

HVAC & Electrical

- 14 SEER Heat Pump with dual zoning where applicable
- Ceiling fans in all bedrooms and covered deck areas. Light and fan switched separately.
- Stainless appliances
- Lighting package to include recessed kitchen lights and pendant lighting over bar/island.
- Attractive standard lighting packages
- 36" ventless gas fireplace with mantle and stone face finishes
- Various finishes available for all hardware. Includes towel bars and toilet paper holders for baths

the KIMBERLY

COTTAGE STYLE

4 BEDROOMS

3 BATHROOMS

2 CAR GARAGE

2,273 SQUARE FEET



the KIMBERLY

» COTTAGE STYLE

» 4 BEDROOMS

» 3 BATHROOMS

» 2 CAR GARAGE

» 2,273 SQUARE FEET

Garage: 637 Sq. Ft.

Deck: 196 Sq. Ft.

Front Porch: 134 Sq. Ft.

Exterior Features

- Double-hung low-maintenance windows
- Low-maintenance cement siding
- Covered porch on front and rear
- 2x6 exterior walls
- Fiberglass exterior doors
- Limited Lifetime Warranty on asphalt shingles

Interior Features

- 9' ceilings with smooth finish
- Cabinets with solid maple dovetail drawers and soft close hinges/slides
- Granite and/or quartz countertops
- Quality plumbing fixtures
- Raised height elongated bowl toilets
- Engineered hardwood or luxury vinyl flooring in main areas
- Ceramic tile flooring in bathrooms
- Tiled shower enclosure in primary bath
- ADA blocking for future grab bars
- Curbless shower entry for accessibility
- Vaulted ceilings where indicated
- Tray ceiling in dining room and primary bedroom
- High-quality carpet in bedrooms
- Two coats of paint on the walls with flat finish walls and semi-gloss trim

HVAC & Electrical

- 14 SEER Heat Pump with dual zoning where applicable
- Ceiling fans in all bedrooms and covered deck areas. Light and fan switched separately.
- Stainless appliances
- Lighting package to include recessed kitchen lights and pendant lighting over bar/island.
- Attractive standard lighting packages
- 36" ventless gas fireplace with mantle and stone face finishes
- Various finishes available for all hardware. Includes towel bars and toilet paper holders for baths