



# *floor plans*

525 N. Main Street  
Hendersonville, NC 28792

(828) 698-2400

[vistahomebuilders.com](http://vistahomebuilders.com)

# *table of* CONTENTS

---

The Fontana . . . . . 1,220 Sq. Ft. . . . .	3
The Elm . . . . . 1,264 Sq. Ft. . . . .	5
The Magnolia . . . . . 1,374 Sq. Ft. . . . .	7
The Dogwood . . . . . 1,432 Sq. Ft. . . . .	9
The Lyndon . . . . . 1,454 Sq. Ft. . . . .	11
The Nantahala . . . . . 1,503 Sq. Ft. . . . .	13
The Birch . . . . . 1,568 Sq. Ft. . . . .	15
The Poplar . . . . . 1,580 Sq. Ft . . . . .	17
The Spruce . . . . . 1,617 Sq. Ft. . . . .	19
The Blackberry . . . . . 1,640 Sq. Ft . . . . .	21
The Laurel . . . . . 1,660 Sq. Ft . . . . .	23
The St. Charles . . . . . 1,750 Sq. Ft. . . . .	25
The Ashwood . . . . . 1,754 Sq. Ft. . . . .	27
The Catawba . . . . . 1,792 Sq. Ft. . . . .	29
The Oak . . . . . 1,795 Sq. Ft. . . . .	31
The Leo . . . . . 1,910 Sq. Ft. . . . .	33
The Faulkner . . . . . 1,963 Sq. Ft. . . . .	35
The Ferndale . . . . . 2,069 Sq. Ft . . . . .	37
The Briarwood . . . . . 2,140 Sq. Ft. . . . .	39
The Ridgewood . . . . . 2,236 Sq. Ft . . . . .	41
The Kimberly . . . . . 2,273 Sq. Ft . . . . .	43

*The images and renderings used throughout this document are artistic interpretations of the home designs. They are not meant to be exact renditions. Some items pictured may not be standard and/or represent exact elements. Exact grading, landscaping, finishes, colors, and materials may differ.*

01

# *the* FONTANA

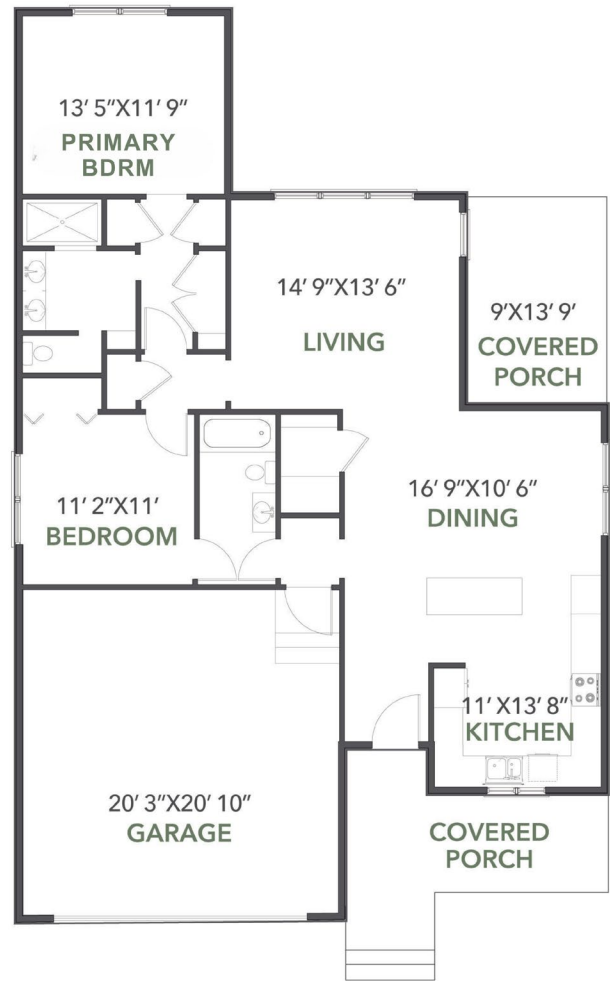
CRAFTSMAN STYLE

2 BEDROOMS

2 BATHROOMS

2 CAR GARAGE

1,220 SQUARE FEET



01

# *the* FONTANA

» CRAFTSMAN STYLE

---

» 2 BEDROOMS

---

» 2 BATHROOMS

---

» 2 CAR GARAGE

---

» 1,220 SQUARE FEET

*Garage: 421 Sq. Ft.*

*Deck: 123 Sq. Ft.*

*Front Porch: 96 Sq. Ft.*

## *Exterior Features*

- Double-hung low-maintenance windows
- Low-maintenance cement siding
- Low-maintenance exterior trim
- Large covered porch on front and rear
- Stained cedar shakes
- Fiberglass exterior doors
- Limited Lifetime Warranty on asphalt shingles

## *Interior Features*

- 9' ceilings with smooth finish
- Cabinets with solid maple dovetail drawers and soft close hinges/slides
- Large open kitchen with island
- Quality plumbing fixtures
- Open floor plan
- Ceramic tile flooring in bathrooms
- Granite and/or quartz countertops
- Tiled shower enclosure in primary bath
- Vaulted ceilings where indicated
- Engineered hardwood or luxury vinyl flooring in main areas
- High-quality carpet in bedrooms
- Two coats of paint on the walls with flat finish walls and semi-gloss trim

## *HVAC & Electrical*

- 14 SEER Heat Pump with dual zoning where applicable
- Ceiling fans in all bedrooms and covered deck areas. Light and fan switched separately
- Stainless appliances
- Lighting package to include recessed kitchen lights and pendant lighting over bar/island
- Attractive standard lighting packages
- 36" ventless gas fireplace with mantle and stone face finishes
- Various finishes available for all hardware. Includes towel bars and toilet paper holders for baths.



02

# the ELM

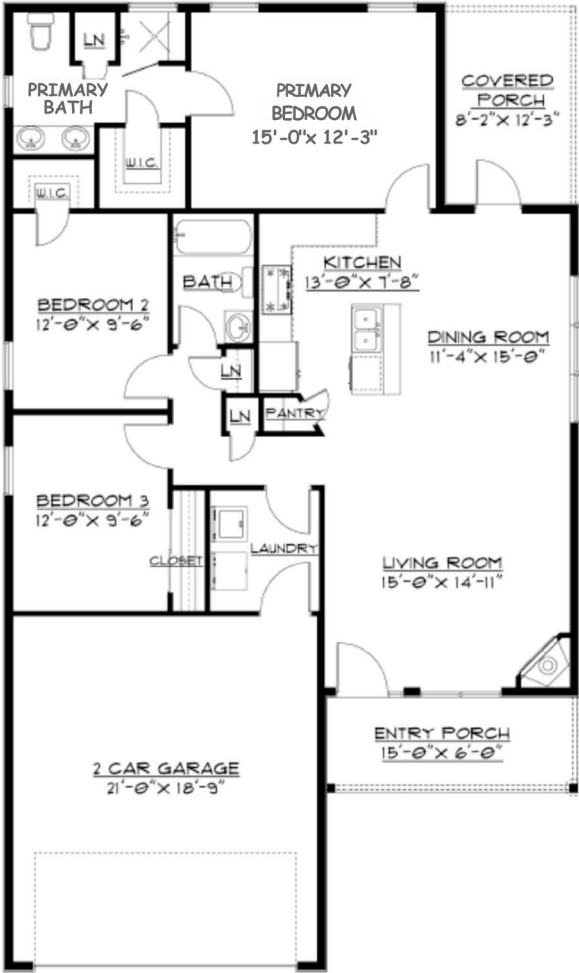
COTTAGE STYLE

3 BEDROOMS

2 BATHROOMS

2 CAR GARAGE

1,264 SQUARE FEET



02

# the ELM

» COTTAGE STYLE

---

» 3 BEDROOMS

---

» 2 BATHROOMS

---

» 2 CAR GARAGE

---

» 1,264 SQUARE FEET

*Garage: 425 Sq. Ft.*

*Deck: 96 Sq. Ft.*

*Front Porch: 90 Sq. Ft.*

## *Exterior Features*

- Double-hung low-maintenance windows
- Low-maintenance cement siding
- Covered porch on front and rear
- 2x6 exterior walls
- Fiberglass exterior doors
- Limited Lifetime Warranty on asphalt shingles

## *Interior Features*

- 9' ceilings with smooth finish
- Cabinets with solid maple dovetail drawers and soft close hinges/slides
- Granite and/or quartz countertops
- Quality plumbing fixtures
- Open floor plan
- Raised height elongated bowl toilets
- Engineered hardwood or luxury vinyl flooring in main areas
- Ceramic tile flooring in bathrooms
- Tiled shower enclosure in primary bath
- Vaulted ceilings where indicated
- High-quality carpet in bedrooms
- Two coats of paint on the walls with flat finish walls and semi-gloss trim

## *HVAC & Electrical*

- 14 SEER Heat Pump with dual zoning where applicable
- Ceiling fans in all bedrooms and covered deck areas. Light and fan switched separately.
- Stainless appliances
- Lighting package to include recessed kitchen lights and pendant lighting over bar/island.
- Attractive standard lighting packages
- 36" ventless gas fireplace with mantle and stone face finishes
- Various finishes available for all hardware. Includes towel bars and toilet paper holders for baths



03

# the MAGNOLIA

COTTAGE STYLE

3 BEDROOMS

2 BATHROOMS

2 CAR GARAGE

1,374 SQUARE FEET



03

# *the* MAGNOLIA

» COTTAGE STYLE

---

» 3 BEDROOMS

---

» 2 BATHROOMS

---

» 2 CAR GARAGE

---

» 1,374 SQUARE FEET

*Garage: 500 Sq. Ft.*

*Deck: 110 Sq. Ft.*

## *Exterior Features*

- Double-hung low-maintenance windows
- Low-maintenance cement siding
- 2x6 exterior walls
- Fiberglass exterior doors
- Limited Lifetime Warranty on asphalt shingles
- Lifetime Warranty on asphalt shingles

## *Interior Features*

- 9' ceilings with smooth finish
- Cabinets with solid maple dovetail drawers and soft close hinges/slides
- Granite and/or quartz countertops
- Quality plumbing fixtures
- Raised height elongated bowl toilets
- Engineered hardwood or luxury vinyl flooring in main areas
- Ceramic tile flooring in bathrooms
- Tiled shower enclosure in primary bath
- Vaulted ceilings where indicated
- Tray ceiling in primary bedroom
- High-quality carpet in bedrooms
- Two coats of paint on the walls with flat finish walls and semi-gloss trim

## *HVAC & Electrical*

- 14 SEER Heat Pump with dual zoning where applicable
- Ceiling fans in all bedrooms and covered deck areas. Light and fan switched separately.
- Stainless appliances
- Lighting package to include recessed kitchen lights and pendant lighting over bar/island.
- Attractive standard lighting packages
- 36" ventless gas fireplace with mantle and stone face finishes
- Various finishes available for all hardware. Includes towel bars and toilet paper holders for baths



04

# the DOGWOOD

COTTAGE STYLE

3 BEDROOMS

2 BATHROOMS

2 CAR GARAGE

1,432 SQUARE FEET



04

# *the* DOGWOOD

» COTTAGE STYLE

---

» 3 BEDROOMS

---

» 2 BATHROOMS

---

» 2 CAR GARAGE

---

» 1,432 SQUARE FEET

*Garage: 420 Sq. Ft.*

*Deck: 160 Sq. Ft.*

## *Exterior Features*

- Double-hung low-maintenance windows
- Low-maintenance cement siding
- 2x6 exterior walls
- Fiberglass exterior doors
- Limited Lifetime Warranty on asphalt shingles

## *Interior Features*

- 9' ceilings with smooth finish
- Cabinets with solid maple dovetail drawers and soft close hinges/slides
- Granite and/or quartz countertops
- Quality plumbing fixtures
- Raised height elongated bowl toilets
- Engineered hardwood or luxury vinyl flooring in main areas
- Ceramic tile flooring in bathrooms
- Tiled shower enclosure in primary bath
- Vaulted ceilings where indicated
- Tray ceiling in primary bedroom
- High-quality carpet in bedrooms
- Two coats of paint on the walls with flat finish walls and semi-gloss trim

## *HVAC & Electrical*

- 14 SEER Heat Pump with dual zoning where applicable
- Ceiling fans in all bedrooms and covered deck areas. Light and fan switched separately.
- Stainless appliances
- Lighting package to include recessed kitchen lights and pendant lighting over bar/island.
- Attractive standard lighting packages
- 36" ventless gas fireplace with mantle and stone face finishes
- Various finishes available for all hardware. Includes towel bars and toilet paper holders for baths

# the LYNDON

COTTAGE STYLE

3 BEDROOMS  
+ *Optional Bonus Room*

2 BATHROOMS

2 CAR GARAGE

1,454 SQUARE FEET





# *the* LYNDON

» COTTAGE STYLE

---

» 3 BEDROOMS + OPTIONAL BONUS ROOM

---

» 2 BATHROOMS

---

» 2 CAR GARAGE

---

» 1,454 SQUARE FEET

*Bonus Room: +193 Sq. Ft.*

*Garage: 450 Sq. Ft.*

*Deck: 76 Sq. Ft.*

*Front Porch: 85 Sq. Ft.*

## *Exterior Features*

- Double-hung low-maintenance windows
- Low-maintenance cement siding
- Covered porch on front and rear
- 2x6 exterior walls
- Fiberglass exterior doors
- Limited Lifetime Warranty on asphalt shingles

## *Interior Features*

- 9' ceilings with smooth finish
- Cabinets with solid maple dovetail drawers and soft close hinges/slides
- Granite and/or quartz countertops
- Quality plumbing fixtures
- Open floor plan
- Raised height elongated bowl toilets
- Engineered hardwood or luxury vinyl flooring in main areas
- Ceramic tile flooring in bathrooms
- Tiled shower enclosure in primary bath
- ADA blocking for future grab bars
- Curbless shower entry for accessibility
- Vaulted ceilings where indicated
- High-quality carpet in bedrooms
- Two coats of paint on the walls with flat finish walls and semi-gloss trim

## *HVAC & Electrical*

- 14 SEER Heat Pump with dual zoning where applicable
- Ceiling fans in all bedrooms and covered deck areas. Light and fan switched separately.
- Stainless appliances
- Lighting package to include recessed kitchen lights and pendant lighting over bar/island.
- Attractive standard lighting packages
- 36" ventless gas fireplace with mantle and stone face finishes
- Various finishes available for all hardware. Includes towel bars and toilet paper holders for baths

05

# *the* NANTAHALA

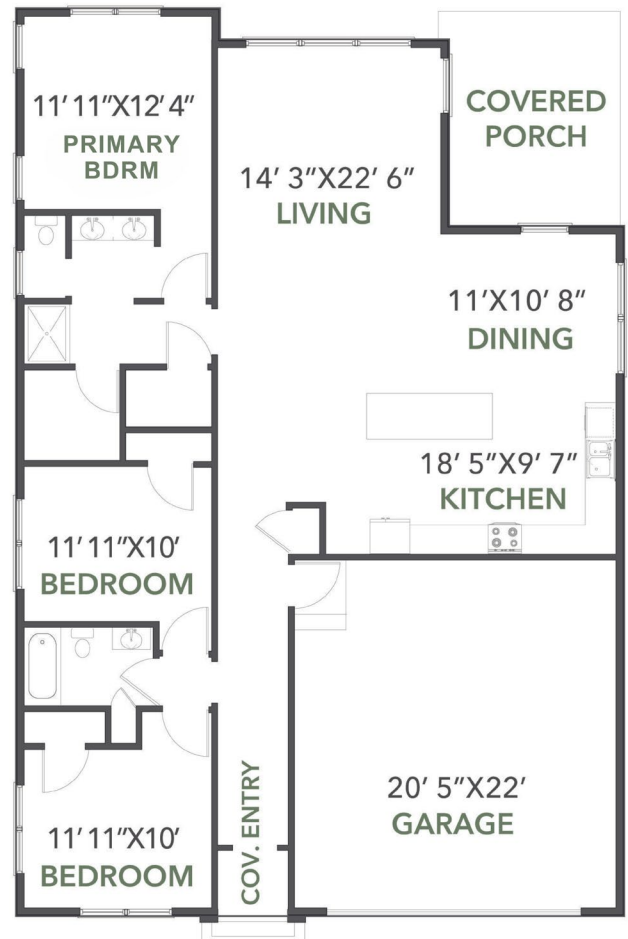
CRAFTSMAN STYLE

3 BEDROOMS

2 BATHROOMS

2 CAR GARAGE

1,503 SQUARE FEET



05

# *the* NANTAHALA

» CRAFTSMAN STYLE

---

» 3 BEDROOMS

---

» 2 BATHROOMS

---

» 2 CAR GARAGE

---

» 1,503 SQUARE FEET

*Garage: 448 Sq. Ft.*

*Deck: 22 Sq. Ft.*

*Front Porch: 22 Sq. Ft.*

## *Exterior Features*

- Double-hung low-maintenance windows
- Low-maintenance cement siding
- Low-maintenance exterior trim
- Large covered deck
- Stained cedar shakes
- Fiberglass exterior doors
- Limited Lifetime Warranty on asphalt shingles

## *Interior Features*

- 9' ceilings with smooth finish
- Cabinets with solid maple dovetail drawers and soft close hinges/slides
- Large open kitchen with island
- Quality plumbing fixtures
- Open floor plan
- Ceramic tile flooring in bathrooms
- Granite and/or quartz countertops
- Tiled shower enclosure in primary bath
- Vaulted ceilings where indicated
- Engineered hardwood or luxury vinyl flooring in main areas
- High-quality carpet in bedrooms
- Two coats of paint on the walls with flat finish walls and semi-gloss trim

## *HVAC & Electrical*

- 14 SEER Heat Pump with dual zoning where applicable
- Ceiling fans in all bedrooms and covered deck areas. Light and fan switched separately
- Stainless appliances
- Lighting package to include recessed kitchen lights and pendant lighting over bar/island
- Attractive standard lighting packages
- 36" ventless gas fireplace with mantle and stone face finishes
- Various finishes available for all hardware. Includes towel bars and toilet paper holders for baths



06

# the BIRCH

COTTAGE STYLE

3 BEDROOMS

2 BATHROOMS

2 CAR GARAGE

1,568 SQUARE FEET



06

# *the* BIRCH

» COTTAGE STYLE

---

» 3 BEDROOMS

---

» 2 BATHROOMS

---

» 2 CAR GARAGE

---

» 1,568 SQUARE FEET

*Garage: 400 Sq. Ft.*

*Deck: 256 Sq. Ft.*

## *Exterior Features*

- Double-hung low-maintenance windows
- Low-maintenance cement siding
- 2x6 exterior walls
- Fiberglass exterior doors
- Limited Lifetime Warranty on asphalt shingles

## *Interior Features*

- 9' ceilings with smooth finish
- Cabinets with solid maple dovetail drawers and soft close hinges/slides
- Granite and/or quartz countertops
- Quality plumbing fixtures
- Open floor plan
- Raised height elongated bowl toilets
- Engineered hardwood or luxury vinyl flooring in main areas
- Ceramic tile flooring in bathrooms
- Tiled shower enclosure in primary bath
- Vaulted ceilings where indicated
- Tray ceiling in primary bedroom
- High-quality carpet in bedrooms
- Two coats of paint on the walls with flat finish walls and semi-gloss trim

## *HVAC & Electrical*

- 14 SEER Heat Pump with dual zoning where applicable
- Ceiling fans in all bedrooms and covered deck areas. Light and fan switched separately.
- Stainless appliances
- Lighting package to include recessed kitchen lights and pendant lighting over bar/island.
- Attractive standard lighting packages
- 36" ventless gas fireplace with mantle and stone face finishes
- Various finishes available for all hardware. Includes towel bars and toilet paper holders for baths

# the POPLAR

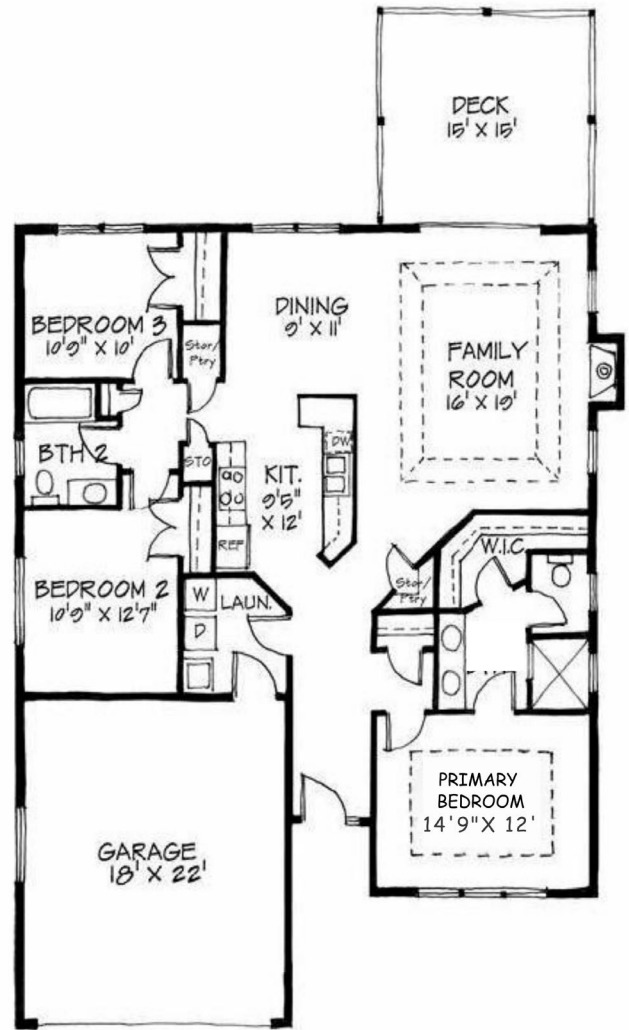
CRAFTSMAN STYLE

3 BEDROOMS

2 BATHROOMS

2 CAR GARAGE

1,580 SQUARE FEET





13

# the POPLAR

» CRAFTSMAN STYLE

---

» 3 BEDROOMS

---

» 2 BATHROOMS

---

» 2 CAR GARAGE

---

» 1,580 SQUARE FEET

*Garage: 396 Sq. Ft.*

*Deck: 255 Sq. Ft.*

## *Exterior Features*

- Double-hung low-maintenance windows
- Low-maintenance cement siding
- Low-maintenance exterior trim
- Large deck off of living room
- Stone details on front façade
- Fiberglass exterior doors
- Limited Lifetime Warranty on asphalt shingles

## *Interior Features*

- 9' ceilings with smooth finish
- Cabinets with solid maple dovetail drawers and soft close hinges/slides
- Quality plumbing fixtures
- Open floor plan
- Ceramic tile flooring in bathrooms
- Large open kitchen with island
- Granite and/or quartz countertops
- Tiled shower enclosure in primary bath
- Vaulted ceilings where indicated
- Tray ceiling in primary bedroom and living room
- Engineered hardwood or luxury vinyl flooring in main areas
- High-quality carpet in bedrooms
- Two coats of paint on the walls with flat finish walls and semi-gloss trim

## *HVAC & Electrical*

- 14 SEER Heat Pump with dual zoning where applicable
- Ceiling fans in all bedrooms and covered deck areas. Light and fan switched separately
- Stainless appliances
- Lighting package to include recessed kitchen lights and pendant lighting over bar/island
- Attractive standard lighting packages
- 36" ventless gas fireplace with mantle and stone face finishes
- Various finishes available for all hardware. Includes towel bars and toilet paper holders for baths

09

# the SPRUCE

COTTAGE STYLE

3 BEDROOMS

2 BATHROOMS

2 CAR GARAGE

1,617 SQUARE FEET



# *the* SPRUCE

» COTTAGE STYLE

---

» 3 BEDROOMS

---

» 2 BATHROOMS

---

» 2 CAR GARAGE

---

» 1,617 SQUARE FEET

*Deck: 108 Sq. Ft.*

*Front Porch: 98 Sq. Ft.*

## *Exterior Features*

- Double-hung low-maintenance windows
- Low-maintenance cement siding
- Low-maintenance exterior trim
- Large covered deck
- Fiberglass exterior doors
- Limited Lifetime Warranty on asphalt shingles

## *Interior Features*

- 9' ceilings with smooth finish
- Cabinets with solid maple dovetail drawers and soft close hinges/slides
- Large open kitchen with island
- Quality plumbing fixtures
- Open floor plan
- Ceramic tile flooring in bathrooms
- Large laundry and mudroom
- Granite and/or quartz countertops
- Tiled shower enclosure in primary bath
- Vaulted ceilings where indicated
- Engineered hardwood or luxury vinyl flooring in main areas
- High-quality carpet in bedrooms
- Two coats of paint on the walls with flat finish walls and semi-gloss trim

## *HVAC & Electrical*

- 14 SEER Heat Pump with dual zoning where applicable
- Ceiling fans in all bedrooms and covered deck areas. Light and fan switched separately
- Stainless appliances
- Lighting package to include recessed kitchen lights and pendant lighting over bar/island
- Attractive standard lighting packages
- 36" ventless gas fireplace with mantle and stone face finishes
- Various finishes available for all hardware. Includes towel bars and toilet paper holders for baths



# the BLACKBERRY

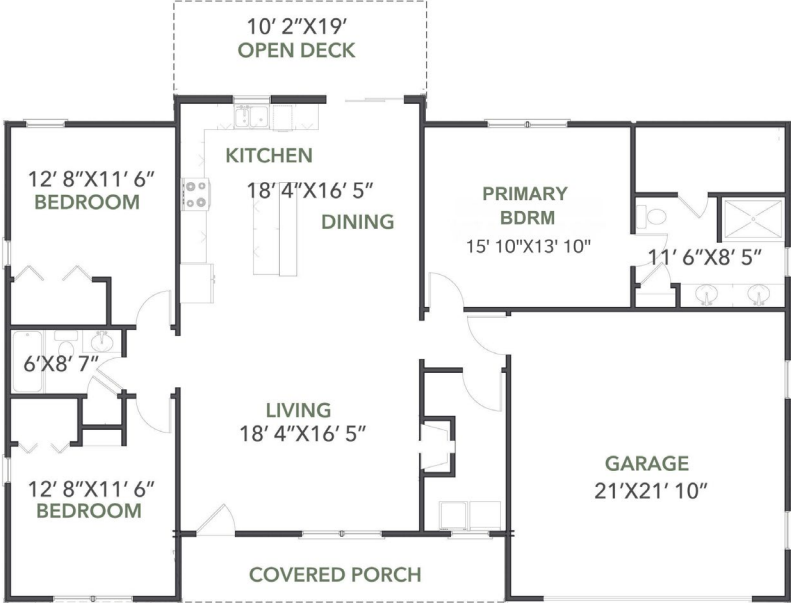
CRAFTSMAN STYLE

3 BEDROOMS

2 BATHROOMS

2 CAR GARAGE

1,640 SQUARE FEET



04

# *the* BLACKBERRY

» CRAFTSMAN STYLE

---

» 3 BEDROOMS

---

» 2 BATHROOMS

---

» 2 CAR GARAGE

---

» 1,640 SQUARE FEET

*Garage: 458 Sq. Ft.*

*Deck: 190 Sq. Ft.*

*Front Porch: 125 Sq. Ft.*

## *Exterior Features*

- Double-hung low-maintenance windows
- Low-maintenance cement siding
- Low-maintenance exterior trim
- Covered front porch
- Stained cedar shakes
- Fiberglass exterior doors
- Limited Lifetime Warranty on asphalt shingles

## *Interior Features*

- 9' ceilings with smooth finish
- 12' ceilings in living, dining, and kitchen area
- Cabinets with solid maple dovetail drawers and soft close hinges/slides
- Large open kitchen with island
- Quality plumbing fixtures
- Open floor plan
- Ceramic tile flooring in bathrooms
- Walk-in laundry room
- Granite and/or quartz countertops
- Tiled shower enclosure in primary bath
- Vaulted ceilings where indicated
- Engineered hardwood or luxury vinyl flooring in main areas
- High-quality carpet in bedrooms
- Two coats of paint on the walls with flat finish walls and semi-gloss trim

## *HVAC & Electrical*

- 14 SEER Heat Pump with dual zoning where applicable
- Ceiling fans in all bedrooms and covered deck areas. Light and fan switched separately
- Stainless appliances
- Lighting package to include recessed kitchen lights and pendant lighting over bar/island
- Attractive standard lighting packages
- 36" ventless gas fireplace with mantle and stone face finishes
- Various finishes available for all hardware. Includes towel bars and toilet paper holders for baths
- Includes towel bars and toilet paper holders for baths



# the LAUREL

COTTAGE STYLE

3 BEDROOMS  
+ *Optional Bonus Room*

2 BATHROOMS

2 CAR GARAGE

1,660 SQUARE FEET



# *the* LAUREL

» COTTAGE STYLE

---

» 3 BEDROOMS + OPTIONAL BONUS ROOM

---

» 2 BATHROOMS

---

» 2 CAR GARAGE

---

» 1,660 SQUARE FEET

*Bonus Room: +223 Sq. Ft.*

*Garage: 462 Sq. Ft.*

*Deck: 144 Sq. Ft.*

*Front Porch: 170 Sq. Ft.*

## *Exterior Features*

- Double-hung low-maintenance windows
- Low-maintenance cement siding
- 2x6 exterior walls
- Covered porch on front and rear
- Fiberglass exterior doors
- Limited Lifetime Warranty on asphalt shingles

## *Interior Features*

- 9' ceilings with smooth finish
- Cabinets with solid maple dovetail drawers and soft close hinges/slides
- Granite and/or quartz countertops
- Quality plumbing fixtures
- Raised height elongated bowl toilets
- Engineered hardwood or luxury vinyl flooring in main areas
- Ceramic tile flooring in bathrooms
- Tiled shower enclosure in primary bath
- ADA blocking for future grab bars
- Curbless shower entry for accessibility
- Vaulted ceilings where indicated
- Tray ceiling in dining room
- High-quality carpet in bedrooms
- Two coats of paint on the walls with flat finish walls and semi-gloss trim

## *HVAC & Electrical*

- 14 SEER Heat Pump with dual zoning where applicable
- Ceiling fans in all bedrooms and covered deck areas. Light and fan switched separately.
- Stainless appliances
- Lighting package to include recessed kitchen lights and pendant lighting over bar/island.
- Attractive standard lighting packages
- 36" ventless gas fireplace with mantle and stone face finishes
- Various finishes available for all hardware. Includes towel bars and toilet paper holders for baths



# the ST. CHARLES

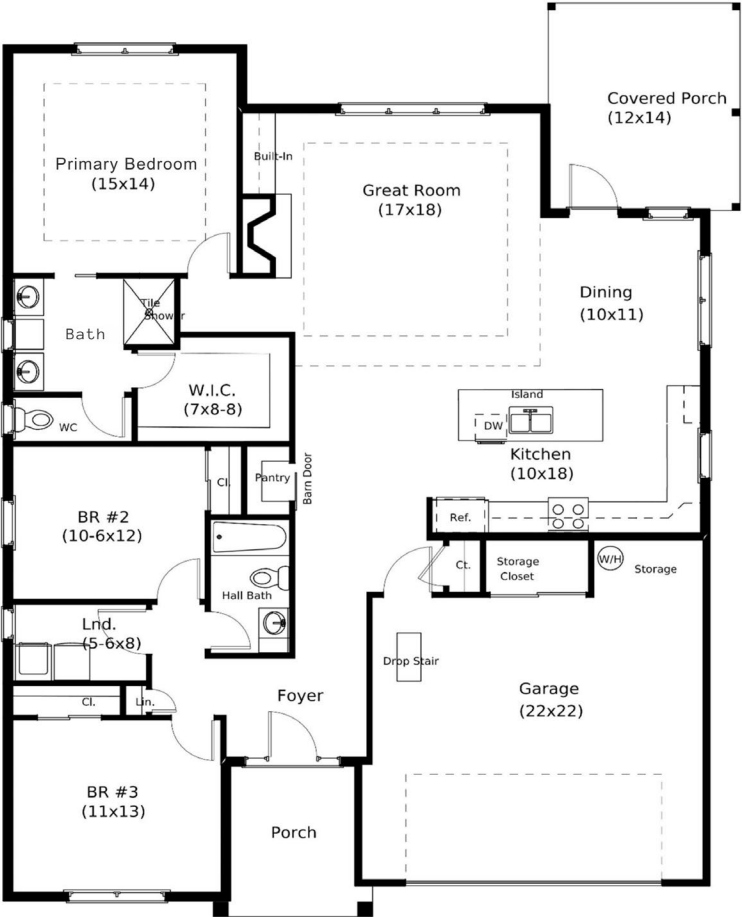
COTTAGE STYLE

3 BEDROOMS

2 BATHROOMS

2 CAR GARAGE

1,750 SQUARE FEET



# *the* ST. CHARLES

» COTTAGE STYLE

---

» 3 BEDROOMS

---

» 2 BATHROOMS

---

» 2 CAR GARAGE

---

» 1,750 SQUARE FEET

*Garage: 506 Sq. Ft.*

*Deck: 168 Sq. Ft.*

*Front Porch: 40 Sq. Ft.*

## *Exterior Features*

- Double-hung low-maintenance windows
- Low-maintenance cement siding
- 2x6 exterior walls
- Fiberglass exterior doors
- Limited Lifetime Warranty on asphalt shingles

## *Interior Features*

- 9' ceilings with smooth finish
- Cabinets with solid maple dovetail drawers and soft close hinges/slides
- Granite and/or quartz countertops
- Quality plumbing fixtures
- Raised height elongated bowl toilets
- Engineered hardwood or luxury vinyl flooring in main areas
- Ceramic tile flooring in bathrooms
- Tiled shower enclosure in primary bath
- ADA blocking for future grab bars
- Curbless shower entry for accessibility
- Vaulted ceilings where indicated
- Tray ceiling in living room and primary bedroom
- Barn door pantry
- High-quality carpet in bedrooms
- Two coats of paint on the walls with flat finish walls and semi-gloss trim

## *HVAC & Electrical*

- 14 SEER Heat Pump with dual zoning where applicable
- Ceiling fans in all bedrooms and covered deck areas. Light and fan switched separately.
- Stainless appliances
- Lighting package to include recessed kitchen lights and pendant lighting over bar/island.
- Attractive standard lighting packages
- 36" ventless gas fireplace with mantle and stone face finishes
- Various finishes available for all hardware. Includes towel bars and toilet paper holders for baths



# the ASHWOOD

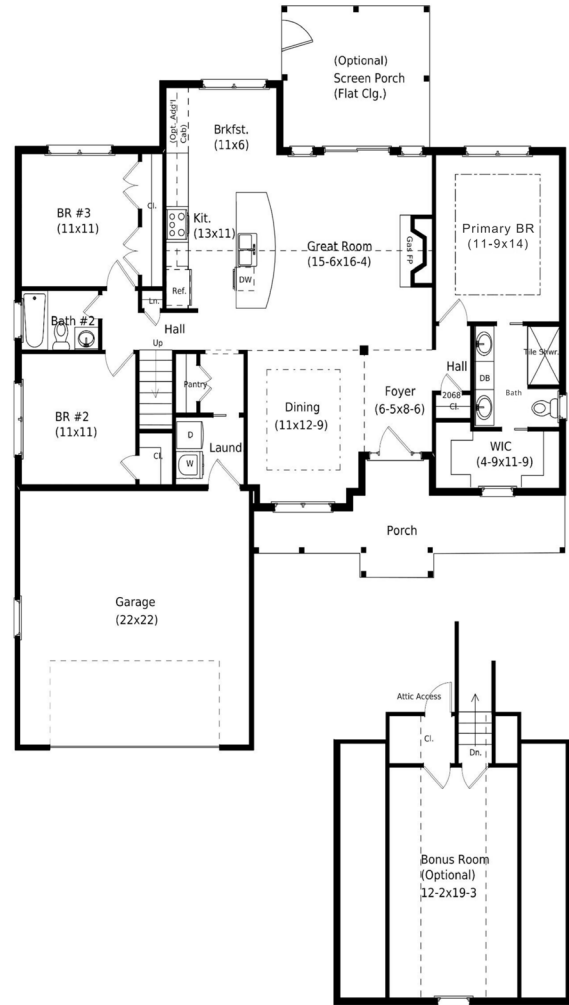
COTTAGE STYLE

3 BEDROOMS  
+ *Optional Bonus Room*

2 BATHROOMS

2 CAR GARAGE

1,754 SQUARE FEET



# *the* ASHWOOD

» COTTAGE STYLE

---

» 3 BEDROOMS + OPTIONAL BONUS ROOM

---

» 2 BATHROOMS

---

» 2 CAR GARAGE

---

» 1,754 SQUARE FEET

*Bonus Room: +288 Sq. Ft.*

*Garage: 476 Sq. Ft.*

*Deck: 168 Sq. Ft.*

*Front Porch: 94 Sq. Ft.*

## *Exterior Features*

- Double-hung low-maintenance windows
- Low-maintenance cement siding
- Covered porch on front and rear
- 2x6 exterior walls
- Fiberglass exterior doors
- Limited Lifetime Warranty on asphalt shingles

## *Interior Features*

- 9' ceilings with smooth finish
- Cabinets with solid maple dovetail drawers and soft close hinges/slides
- Granite and/or quartz countertops
- Quality plumbing fixtures
- Raised height elongated bowl toilets
- Engineered hardwood or luxury vinyl flooring in main areas
- Ceramic tile flooring in bathrooms
- Tiled shower enclosure in primary bath
- ADA blocking for future grab bars
- Curbless shower entry for accessibility
- Vaulted ceilings where indicated
- Tray ceiling in dining room and primary bedroom
- High-quality carpet in bedrooms
- Two coats of paint on the walls with flat finish walls and semi-gloss trim

## *HVAC & Electrical*

- 14 SEER Heat Pump with dual zoning where applicable
- Ceiling fans in all bedrooms and covered deck areas. Light and fan switched separately.
- Stainless appliances
- Lighting package to include recessed kitchen lights and pendant lighting over bar/island.
- Attractive standard lighting packages
- 36" ventless gas fireplace with mantle and stone face finishes
- Various finishes available for all hardware. Includes towel bars and toilet paper holders for baths



# the CATAWBA

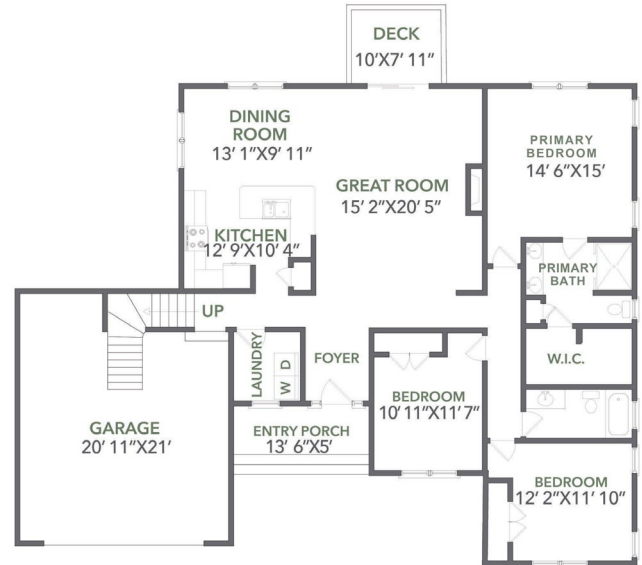
CRAFTSMAN STYLE

3 BEDROOMS  
+ *Optional Bonus Room*

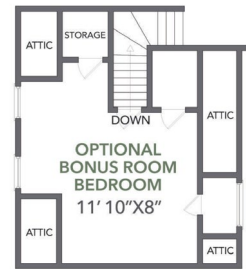
2 BATHROOMS

2 CAR GARAGE

1,792 SQUARE FEET



MAIN



UPPER



# the CATAWBA

» CRAFTSMAN STYLE

---

» 3 BEDROOMS + OPTIONAL BONUS ROOM

---

» 2 BATHROOMS

---

» 2 CAR GARAGE

---

» 1,792 SQUARE FEET

*Bonus Room: +375 Sq. Ft.*

*Deck: 205 Sq. Ft.*

*Front Porch: 68 Sq. Ft.*

## *Exterior Features*

- Double-hung low-maintenance windows
- Low-maintenance cement siding
- Low-maintenance exterior trim
- Covered porch on front and rear
- Stained cedar shakes
- Fiberglass exterior doors
- Limited Lifetime Warranty on asphalt shingles

## *Interior Features*

- 9' ceilings with smooth finish
- Cabinets with solid maple dovetail drawers and soft close hinges/slides
- Large open kitchen
- Quality plumbing fixtures
- Open floor plan
- Ceramic tile flooring in bathrooms
- Granite and/or quartz countertops
- Tiled shower enclosure in primary bath
- Vaulted ceilings where indicated
- Engineered hardwood or luxury vinyl flooring in main areas
- High-quality carpet in bedrooms
- Two coats of paint on the walls with flat finish walls and semi-gloss trim

## *HVAC & Electrical*

- 14 SEER Heat Pump with dual zoning where applicable
- Ceiling fans in all bedrooms and covered deck areas. Light and fan switched separately
- Stainless appliances
- Lighting package to include recessed kitchen lights and pendant lighting over bar/island
- Attractive standard lighting packages
- 36" ventless gas fireplace with mantle and stone face finishes
- Various finishes available for all hardware. Includes towel bars and toilet paper holders for baths

08

# the OAK

COTTAGE STYLE

3 BEDROOMS

2 BATHROOMS

2 CAR GARAGE

1,795 SQUARE FEET



08

# the OAK

» COTTAGE STYLE

---

» 3 BEDROOMS

---

» 2 BATHROOMS

---

» 2 CAR GARAGE

---

» 1,795 SQUARE FEET

*Garage: 466 Sq. Ft.  
Deck: 181 Sq. Ft.  
Front Porch: 90 Sq. Ft.*

### *Exterior Features*

- Double-hung low-maintenance windows
- Low-maintenance cement siding
- Covered porch on front and rear
- 2x6 exterior walls
- Fiberglass exterior doors
- Limited Lifetime Warranty on asphalt shingles

### *Interior Features*

- 9' ceilings with smooth finish
- Cabinets with solid maple dovetail drawers and soft close hinges/slides
- Granite and/or quartz countertops
- Quality plumbing fixtures
- Open floor plan
- Raised height elongated bowl toilets
- Engineered hardwood or luxury vinyl flooring in main areas
- Ceramic tile flooring in bathrooms
- Tiled shower enclosure in primary bath
- Vaulted ceilings where indicated
- High-quality carpet in bedrooms
- Two coats of paint on the walls with flat finish walls and semi-gloss trim

### *HVAC & Electrical*

- 14 SEER Heat Pump with dual zoning where applicable
- Ceiling fans in all bedrooms and covered deck areas. Light and fan switched separately.
- Stainless appliances
- Lighting package to include recessed kitchen lights and pendant lighting over bar/island.
- Attractive standard lighting packages
- 36" ventless gas fireplace with mantle and stone face finishes
- Various finishes available for all hardware. Includes towel bars and toilet paper holders for baths



*the*  
**LEO**

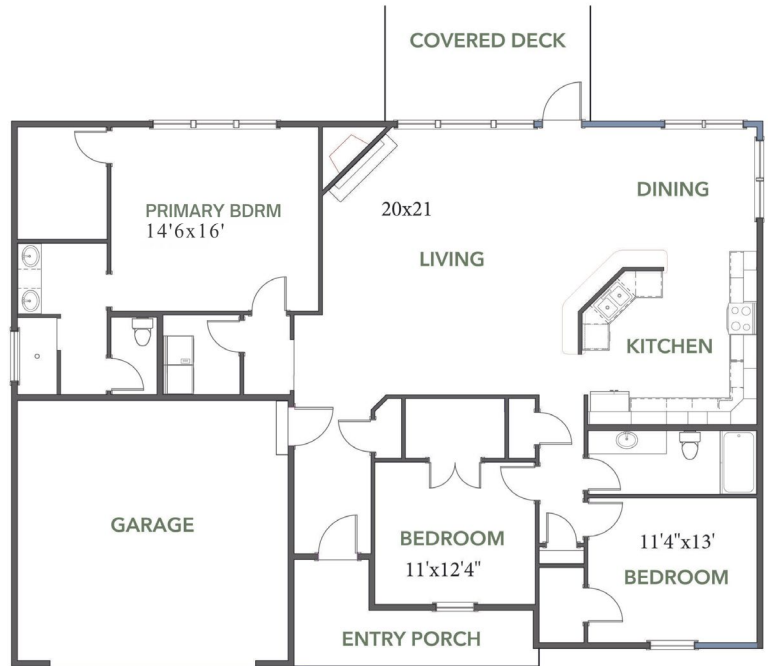
CRAFTSMAN STYLE

3 BEDROOMS

2 BATHROOMS

2 CAR GARAGE

1,910 SQUARE FEET



# the LEO

» CRAFTSMAN STYLE

---

» 3 BEDROOMS

---

» 2 BATHROOMS

---

» 2 CAR GARAGE

---

» 1,910 SQUARE FEET

*Deck: 165 Sq. Ft.*

*Front Porch: 108 Sq. Ft.*

## *Exterior Features*

- Double-hung low-maintenance windows
- Low-maintenance cement siding
- Low-maintenance exterior trim
- Large covered porch on front and rear
- Stained cedar shakes
- Stone details on front façade
- Fiberglass exterior doors
- Limited Lifetime Warranty on asphalt shingles

## *Interior Features*

- 9' ceilings with smooth finish
- Cabinets with solid maple dovetail drawers and soft close hinges/slides
- Quality plumbing fixtures
- Open floor plan
- Ceramic tile flooring in bathrooms
- Large laundry and pantry
- Granite and/or quartz countertops
- Tiled shower enclosure in primary bath
- Vaulted ceilings where indicated
- Engineered hardwood or luxury vinyl flooring in main areas
- High-quality carpet in bedrooms
- Two coats of paint on the walls with flat finish walls and semi-gloss trim

## *HVAC & Electrical*

- 14 SEER Heat Pump with dual zoning where applicable
- Ceiling fans in all bedrooms and covered deck areas. Light and fan switched separately
- Stainless appliances
- Lighting package to include recessed kitchen lights and pendant lighting over bar/island
- Attractive standard lighting packages
- 36" ventless gas fireplace with mantle and stone face finishes
- Various finishes available for all hardware. Includes towel bars and toilet paper holders for baths

10

# the FAULKNER

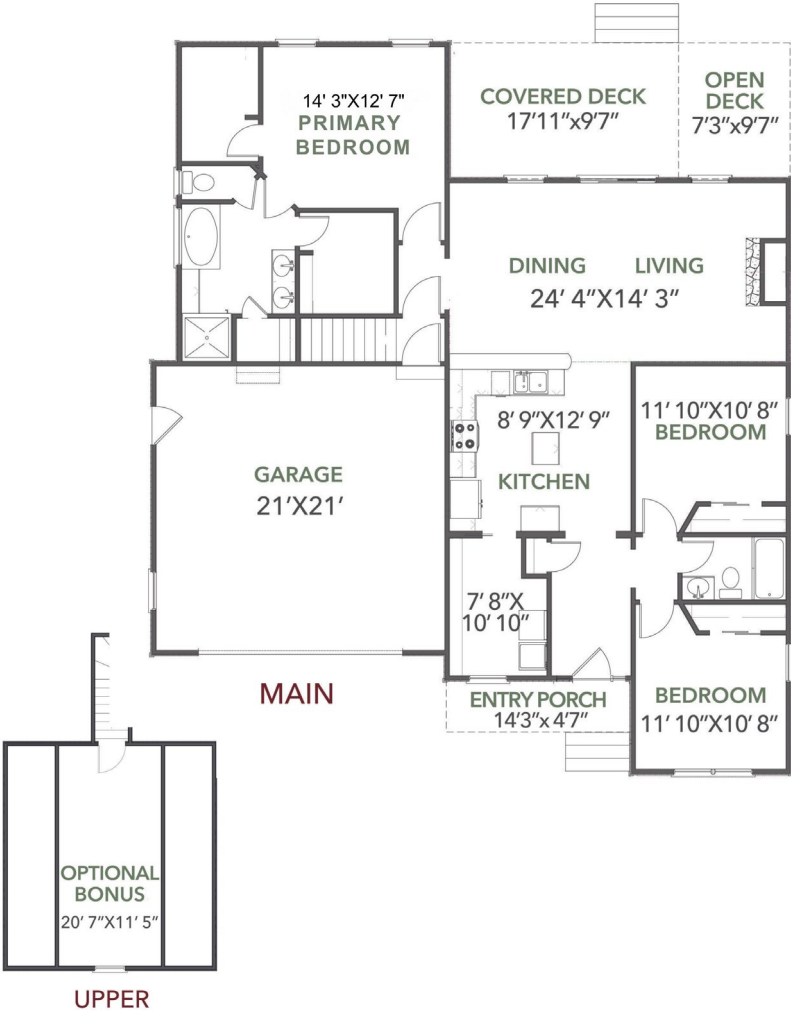
COTTAGE STYLE

3 BEDROOMS  
+ *Optional Bonus Room*

2 BATHROOMS

2 CAR GARAGE

1,963 SQUARE FEET





# *the* FAULKNER

» COTTAGE STYLE

---

» 3 BEDROOMS + OPTIONAL BONUS ROOM

---

» 2 BATHROOMS

---

» 2 CAR GARAGE

---

» 1,963 SQUARE FEET

*Bonus Room: +280 Sq. Ft.*

*Deck: 258 Sq. Ft.*

*Front Porch: 75 Sq. Ft.*

## *Exterior Features*

- Double-hung low-maintenance windows
- Low-maintenance cement siding
- Low-maintenance exterior trim
- Large covered porch on front and rear
- Stained cedar shakes
- Stone details on front façade
- Fiberglass exterior doors
- Limited Lifetime Warranty on asphalt shingles

## *Interior Features*

- 9' ceilings with smooth finish
- Cabinets with solid maple dovetail drawers and soft close hinges/slides
- Quality plumbing fixtures
- Open floor plan
- Ceramic tile flooring in bathrooms
- Large laundry and pantry
- Granite and/or quartz countertops
- Raised bar top in kitchen
- Tiled shower enclosure in primary bath
- Vaulted ceilings where indicated
- Engineered hardwood or luxury vinyl flooring in main areas
- High-quality carpet in bedrooms
- Two coats of paint on the walls with flat finish walls and semi-gloss trim

## *HVAC & Electrical*

- 14 SEER Heat Pump with dual zoning where applicable
- Ceiling fans in all bedrooms and covered deck areas. Light and fan switched separately
- Stainless appliances
- Lighting package to include recessed kitchen lights and pendant lighting over bar/island
- Attractive standard lighting packages
- 36" ventless gas fireplace with mantle and stone face finishes
- Various finishes available for all hardware. Includes towel bars and toilet paper holders for baths



# the FERNDALE

COTTAGE STYLE

3 BEDROOMS  
+ *Optional Bonus Room*

2 BATHROOMS

2 CAR GARAGE

2,069 SQUARE FEET



# the FERNDALE

» COTTAGE STYLE

---

» 3 BEDROOMS + OPTIONAL BONUS ROOM

---

» 2 BATHROOMS

---

» 2 CAR GARAGE

---

» 1,432 SQUARE FEET

*Bonus Room: +302 Sq. Ft.*

*Garage: 528 Sq. Ft.*

*Deck: 144 Sq. Ft.*

*Front Porch: 45 Sq. Ft.*

## *Exterior Features*

- Double-hung low-maintenance windows
- Low-maintenance cement siding
- 2x6 exterior walls
- Fiberglass exterior doors
- Limited Lifetime Warranty on asphalt shingles

## *Interior Features*

- 9' ceilings with smooth finish
- Cabinets with solid maple dovetail drawers and soft close hinges/slides
- Granite and/or quartz countertops
- Quality plumbing fixtures
- Raised height elongated bowl toilets
- Engineered hardwood or luxury vinyl flooring in main areas
- Ceramic tile flooring in bathrooms
- Tiled shower enclosure in primary bath
- ADA blocking for future grab bars
- Curbless shower entry for accessibility
- Vaulted ceilings where indicated
- Tray ceilings are optional
- High-quality carpet in bedrooms
- Two coats of paint on the walls with flat finish walls and semi-gloss trim

## *HVAC & Electrical*

- 14 SEER Heat Pump with dual zoning where applicable
- Ceiling fans in all bedrooms and covered deck areas. Light and fan switched separately.
- Stainless appliances
- Lighting package to include recessed kitchen lights and pendant lighting over bar/island.
- Attractive standard lighting packages
- 36" ventless gas fireplace with mantle and stone face finishes
- Various finishes available for all hardware. Includes towel bars and toilet paper holders for baths

# the BRIARWOOD

COTTAGE STYLE

3 BEDROOMS

3 BATHROOMS

2 CAR GARAGE

2,140 SQUARE FEET





# *the* BRIARWOOD

» COTTAGE STYLE

---

» 3 BEDROOMS

---

» 2 BATHROOMS

---

» 2 CAR GARAGE

---

» 2,140 SQUARE FEET

*Garage: 576 Sq. Ft.*

*Deck: 130 Sq. Ft.*

*Front Porch: 40 Sq. Ft.*

## *Exterior Features*

- Double-hung low-maintenance windows
- Low-maintenance cement siding
- 2x6 exterior walls
- Large covered deck
- Fiberglass exterior doors
- Limited Lifetime Warranty on asphalt shingles

## *Interior Features*

- 9' ceilings with smooth finish
- Cabinets with solid maple dovetail drawers and soft close hinges/slides
- Granite and/or quartz countertops
- Quality plumbing fixtures
- Raised height elongated bowl toilets
- Engineered hardwood or luxury vinyl flooring in main areas
- Ceramic tile flooring in bathrooms
- Tiled shower enclosure in primary bath
- ADA blocking for future grab bars
- Curbless shower entry for accessibility
- Vaulted ceilings where indicated
- Tray ceilings are optional
- High-quality carpet in bedrooms
- Two coats of paint on the walls with flat finish walls and semi-gloss trim

## *HVAC & Electrical*

- 14 SEER Heat Pump with dual zoning where applicable
- Ceiling fans in all bedrooms and covered deck areas. Light and fan switched separately.
- Stainless appliances
- Lighting package to include recessed kitchen lights and pendant lighting over bar/island.
- Attractive standard lighting packages
- 36" ventless gas fireplace with mantle and stone face finishes
- Various finishes available for all hardware. Includes towel bars and toilet paper holders for baths

18

# the RIDGEWOOD

COTTAGE STYLE

4 BEDROOMS

3 BATHROOMS

2 CAR GARAGE

2,236 SQUARE FEET



# *the* RIDGEWOOD

» COTTAGE STYLE

---

» 4 BEDROOMS

---

» 3 BATHROOMS

---

» 2 CAR GARAGE

---

» 2,236 SQUARE FEET

*Garage: 550 Sq. Ft.*

*Deck: 192 Sq. Ft.*

*Front Porch: 168 Sq. Ft.*

## *Exterior Features*

- Double-hung low-maintenance windows
- Low-maintenance cement siding
- 2x6 exterior walls
- Fiberglass exterior doors
- Limited Lifetime Warranty on asphalt shingles

## *Interior Features*

- 9' ceilings with smooth finish
- Cabinets with solid maple dovetail drawers and soft close hinges/slides
- Granite and/or quartz countertops
- Quality plumbing fixtures
- Raised height elongated bowl toilets
- Engineered hardwood or luxury vinyl flooring in main areas
- Ceramic tile flooring in bathrooms
- Tiled shower enclosure in primary bath
- ADA blocking for future grab bars
- Curbless shower entry for accessibility
- Vaulted ceilings where indicated
- Tray ceiling in dining room and primary bedroom
- High-quality carpet in bedrooms
- Two coats of paint on the walls with flat finish walls and semi-gloss trim

## *HVAC & Electrical*

- 14 SEER Heat Pump with dual zoning where applicable
- Ceiling fans in all bedrooms and covered deck areas. Light and fan switched separately.
- Stainless appliances
- Lighting package to include recessed kitchen lights and pendant lighting over bar/island.
- Attractive standard lighting packages
- 36" ventless gas fireplace with mantle and stone face finishes
- Various finishes available for all hardware. Includes towel bars and toilet paper holders for baths



# the KIMBERLY

COTTAGE STYLE

4 BEDROOMS

3 BATHROOMS

2 CAR GARAGE

2,273 SQUARE FEET



# *the* KIMBERLY

» COTTAGE STYLE

---

» 4 BEDROOMS

---

» 3 BATHROOMS

---

» 2 CAR GARAGE

---

» 2,273 SQUARE FEET

*Garage: 637 Sq. Ft.*

*Deck: 196 Sq. Ft.*

*Front Porch: 134 Sq. Ft.*

## *Exterior Features*

- Double-hung low-maintenance windows
- Low-maintenance cement siding
- Covered porch on front and rear
- 2x6 exterior walls
- Fiberglass exterior doors
- Limited Lifetime Warranty on asphalt shingles

## *Interior Features*

- 9' ceilings with smooth finish
- Cabinets with solid maple dovetail drawers and soft close hinges/slides
- Granite and/or quartz countertops
- Quality plumbing fixtures
- Raised height elongated bowl toilets
- Engineered hardwood or luxury vinyl flooring in main areas
- Ceramic tile flooring in bathrooms
- Tiled shower enclosure in primary bath
- ADA blocking for future grab bars
- Curbless shower entry for accessibility
- Vaulted ceilings where indicated
- Tray ceiling in dining room and primary bedroom
- High-quality carpet in bedrooms
- Two coats of paint on the walls with flat finish walls and semi-gloss trim

## *HVAC & Electrical*

- 14 SEER Heat Pump with dual zoning where applicable
- Ceiling fans in all bedrooms and covered deck areas. Light and fan switched separately.
- Stainless appliances
- Lighting package to include recessed kitchen lights and pendant lighting over bar/island.
- Attractive standard lighting packages
- 36" ventless gas fireplace with mantle and stone face finishes
- Various finishes available for all hardware. Includes towel bars and toilet paper holders for baths